

SEAB

SOUTHEAST ASIA BUILDING

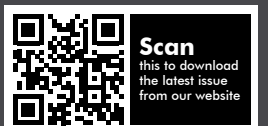


Novotel Shanghai Hongqiao Hotel

Shanghai, China

ARCHITECTURE + INTERIOR Hospitality - Hotels & Resorts

ARCHITECT'S CORNER Interview with Jonathan Evans, Director of Tzannes



Minimal Design for maximum Transparency



The high requirements Architecture that emphasizes transparency, it needs more than large glass surfaces. Only on combination with distinctive and simple cross sections became unprecedented character. This gap between aesthetic and fine line. Schüco bridge the Panorama-Design Schüco curtain wall FWS 35 PD. The curtain offers a minimum face of 35mm and meets the liabilities level.

www.schueco.com | sea@schueco.com

Windows. Doors. Façades.

SCHÜCO



TERRACOTTA FAÇADE
*A modern look to FIRST Shanghai
Jiahui International Hospital*

nbkterracotta.com



® **NBK**
Division of Hunter Douglas

ARCHITECTURAL
TERRACOTTA

CONTENTS

mar - apr 2019

Features

ARCHITECTURE + INTERIOR – Hospitality

- 40 Super luxury hotels in Dubai – A case study by Mapei
- 44 Banyan Tree Anji
- 48 InterContinental Shanghai Wonderland
- 50 Jumeirah Nanjing
- 54 Hotel Suggati
- 56 MGallery Hotel de la Coupole
- 59 Hyatt Regency Bangkok Sukhumvit
- 62 Novotel Shanghai Hongqiao Hotel
- 66 Six Senses Maxwell, Singapore
- 69 The Datai Langkawi
- 72 The Pavilions Himalayas Lake View
- 74 All new Conrad Bangkok

ARCHITECT'S CORNER – Interview

- 76 At the World Architecture Festival (WAF) in Amsterdam in 2018, The Best Use of Certified Timber Prize, supported by PEFC, was awarded to Tzannes for their International House Sydney

project in Australia. Jonathan Evans, Director of Tzannes, tells us more about the sustainable design

Regulars

NEWS

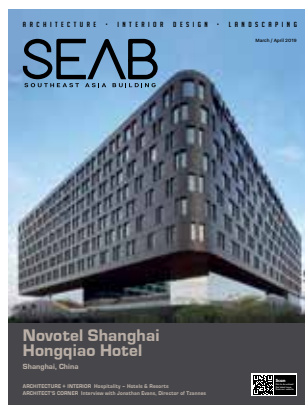
- 6 News from Asia Pacific, Middle East & World

EVENTS CALENDAR

- 35 Guide to international trade shows, expos & fairs

MECHANICAL & ELECTRICAL SERVICES

- 80 Electrical – Building Automation



On the Cover: Novotel Shanghai Hongqiao Hotel in Shanghai, China. Photo: © Aedas

Cover design by Fawzeeah Yamin

NEXT ISSUE THEMES

- Architecture + Interior – Sports Facilities
- Special Feature – Playground Equipment
- Mechanical & Electrical Services [NEW] – Mechanical, Electrical and Plumbing

We're on Social Media



Scan to visit our website
<http://seab.tradelinkmedia.biz>



Like us at
www.facebook.com/southeastasiabuilding



Follow us
@SEA_Building

PUBLISHER

Steven Ooi (steven.ooi@tradelinkmedia.com.sg)

ASSOCIATE PUBLISHER

Eric Ooi (eric.ooi@tradelinkmedia.com.sg)

EDITOR

Amita Natverlal (seab@tradelinkmedia.com.sg)

MARKETING MANAGER

Felix Ooi (felix.ooi@tradelinkmedia.com.sg)

MARKETING EXECUTIVE

Lena Qu Huijie (huijie@tradelinkmedia.com.sg)

HEAD OF GRAPHIC DEPT/ADVERTISEMENT CO-ORDINATOR

Fawzeeah Yamin (fawzeeah@tradelinkmedia.com.sg)

GRAPHIC DESIGNER

Siti Nur Aishah (siti@tradelinkmedia.com.sg)

CIRCULATION

Yvonne Ooi (yvonne.ooi@tradelinkmedia.com.sg)

Disclaimer

All advertisers and contributors must ensure all promotional material and editorial information submitted for all our publications, must be free from any infringement on patent rights and copyrights laws in every jurisdiction. Failure of which, they must be fully liable and accountable for all legal consequences (if any) that may arise.

The Editor reserves the right to omit, amend or alter any press release submitted for publication. The publisher and the editor are unable to accept any liability for errors or omissions that may occur, although every effort has been taken to ensure that all information is correct at the time of going to press. No portion of this publication may be reproduced in whole or part without the written permission of the publisher.

The editorial contents contributed by consultant editor, editor, interviewee and other contributors for this publication, do not, in any way, represent the views of or endorsed by the Publisher or the Management of Trade Link Media Pte Ltd. Thus, the Publisher or Management of Trade Link Media will not be accountable for any legal implications to any party or organisation.

Southeast Asia Building is available free-of-charge to applicants in the building industry who meet the publication's terms of control. For applicants who do not qualify for free subscription, copies will be made available, subject to acceptance by the publisher, for a subscription fee, which varies according to the country of residence in the following manner:

Annual Subscription

Airmail: America/Europe – S\$170, Japan, Australia, New Zealand – S\$170, Asia – S\$140, Brunei – S\$90, Malaysia – S\$90

Surface mail: Singapore – S\$45

(Incl 7% GST Reg No: M2-0108708-2)

Printed in Singapore by Refine Printing Pte Ltd

MCI (P) 081/07/2018 KDN No: 1560 (1270) – (6)

ISSN 2345-7066 (Print) and ISSN 2345-7074 (E-periodical)

Trade Link Media Pte Ltd also publishes:

- Bathroom + Kitchen Today
- Lighting Today
- Security Solutions Today
- Southeast Asia Construction

SOUTHEAST ASIA BUILDING is published bi-monthly by:

Trade Link Media Pte Ltd, 101 Lorong 23, Geylang, #06-04, Prosper House, Singapore 388399

Tel: +65 6842-2580 Fax: +65 6842 2581

Editorial e-mail: seab@tradelinkmedia.com.sg

Website: www.tradelinkmedia.com.sg

Co. Reg. no: 199204277K

Ultralite.

Taking your work **lightly** has never had so many **advantages.**



just 15kg!

Ultralite

Ultralite S1 and **Ultralite S2** : **lightweight** cementitious adhesives with exceptional performance features for all types of ceramic tiles. Ideal for installing **large format thin porcelain tiles**.

- 60% to 80% higher yield
- Improved workability, less tiring to apply
- Quicker application
- Excellent wetting properties
- Highly deformable (Class S1 - S2)
- Contain more than 20% of recycled materials
- Same volume but weigh less: just 15 kg
- Packaging with handles for easier handling

Mapei Far East Pte Ltd
 28 Tuas West Road, Singapore 638383
 T: +65 6862 3488 E: mapei@mapei.com.sg
 Learn more on www.mapei.com.sg





Hello readers, I would like to welcome you to another issue of *Southeast Asia Building* magazine. In this issue, we reflect on the design of hospitality projects. The design of many new hotels and resorts in Asia Pacific has gone through many changes to create a unique guest experience. These include creating unique design concepts and putting great emphasis on interior design furnishings. Enjoy the read and share your thoughts with me if you wish too.

At the World Architecture Festival (WAF) in Amsterdam in 2018, The Best Use of Certified Timber Prize, supported by PEFC, was awarded to Tzannes for their International House Sydney project in Australia. In the Architect's Corner, we speak to Jonathan Evans, Director of Tzannes on the design of the building and the sustainable features of engineered timber as a building material.

I hope you find the articles in this issue interesting and informative. If you have any feedback, please drop me an email at seab@tradelinkmedia.com.sg.

Amita Natverlal



Media Partners of SEAB



powered by

niagara
framework®

JACE 8000 controller



The JACE® 8000 is a compact, embedded IoT (Internet of Things) controller and server platform for connecting multiple and diverse devices and sub-systems. With internet connectivity and web-serving capability, the JACE 8000 controller provides integrated control, supervision, data logging, alarming, scheduling and network management. It streams data and rich graphical displays to a standard web browser via an Ethernet or wireless LAN, or remotely over the internet. Niagara Enterprise Security is a Niagara AX-based application that runs on the JACE 8000. Niagara Analytics 2.0 is a data analytics extension to the Niagara Framework® available on JACE 8000 controllers.

The licensing model for the JACE 8000 controller is simplified and features standard drivers, along with optional IO and field bus expansion modules for ultimate flexibility and expandability. The JACE 8000 controller operates with Niagara 4, the latest version of the Niagara Framework, for optimum performance. In larger facilities, multi-building applications and large-scale control system integrations, Niagara 4 Supervisors can be used with JACE 8000 controllers to aggregate information, including alarms, and historical and real-time data, to create a single, unified application.

Tridium Asia Pacific Pte Ltd
Honeywell Building
17 Changi Business Park Central 1
Singapore 486073

www.tridium.com | tsupportap@tridium.com

TRIDIUM

Aedas and RSHP complete a new Hong Kong boundary crossing facility

Hong Kong – Aedas and Rogers Stirk Harbour + Partners (RSHP) designed the newly opened Passenger Clearance Building (PCB) of the Hong Kong–Zhuhai–Macao Bridge Hong Kong Port. The PCB houses the customs and immigration facilities for travellers leaving and entering Hong Kong by the bridge and is a joint project between the two architects.

The bridge links Zhuhai and Macau to Hong Kong and provides a strategic southern connection between the 11 cities of the Greater Bay Area Megapolis by linking the West and East Pearl River Delta in China. Fostering the flow of people, goods, capital and information it will improve the overall connectivity of the Greater Bay Area and greatly reduce travelling time between Greater Bay Area cities.

The PCB is built on a new 150-hectare artificial island reclaimed from the open waters to the north-east of Hong Kong International Airport (HKIA), and will benefit from the proximity to the Airport's transport links, including the SkyPier Ferry Terminal, and the MTR's Airport Express and Tung Chung line.

It will be the crossing point over the boundary between Hong Kong, Zhuhai and Macao and the facilities will serve as a gateway for all those passing through it, providing Hong Kong with a new 'front door' celebrating travel and surrounded by water with views to a natural skyline of evergreen mountains and hills. The PCB is constantly filled with movement – people arriving and leaving by buses, cars and taxis, and travellers waiting to get immigration clearance. Careful thought has been put in to how users will move around the site. The simple,



clear circulation through the facility and the undulating flow of surrounding waters is reinforced by the waveform roof, enhancing legibility and providing intuitive wayfinding. Movement through the building is punctuated with four double height voids over reflecting pools which allow natural daylight to penetrate all levels of the building and ensure there is a visual connection between Departures on the first floor and Arrivals on the ground floor. These voids and water pools further reinforce the clarity of wayfinding.

The elegant modular roof form ideally lends itself to offsite pre-fabrication and has enabled an efficient construction process achieving a very high level of quality. The project is environmentally friendly and meets the highest standards for new developments utilising innovative green technologies.

Aurecon appoints new Country Manager in Singapore

Singapore – As part of its growth strategy in Asia, global engineering and infrastructure advisory company Aurecon appointed Yang San (YS) Go as the Country Manager of Singapore. YS will be responsible for leading the company's business operations and growth plan in Singapore with effect from 1 December 2018.

YS, who will also remain Infrastructure Leader for Singapore, has more than 30 years of experience in leading, designing, and managing major infrastructure projects in Singapore, Malaysia, United Arab Emirates and Indonesia. YS is a proven leader, with a track record of building a financially successful businesses and high-performing project

delivery teams.

Prior to joining Aurecon in March this year, YS worked at Meinhardt Infrastructure and Parsons Brinckerhoff on several prominent infrastructure and engineering projects including Singapore's Mass Transit System; Taiwan's High-Speed Rail project; United Arab Emirates' Dubai Metro; road improvement projects in Johor and Penang, Malaysia; hotel zone development in Mandalay, Myanmar; and infrastructure planning for Kota Lobam, in Bintan, Indonesia.

"My immediate focus areas are to continue the business' growth trajectory and explore with clients how to harness the power of digital into their assets and infrastructure. Aurecon is full of talented



Mr Yang San Go. Photo: © Aurecon

people and I look forward to working with everyone to help our clients be future-ready," said YS.

GIIS ushers next-generation learning with launch of SMART Campus

Singapore – Global Indian International School (GIIS), a premium quality international educational institute launched its flagship SMART Campus on 13 February 2019. The Campus combines 21st century pedagogy with state-of-the-art facilities to provide a holistic, innovative and disruptive education, allowing GIIS to nurture future-ready global citizens. Mr Ng Chee Meng, Minister in Prime Minister's Office and Member of Parliament Pasir Ris – Punggol GRC officially opened the SMART Campus.

Speaking at opening, Minister Ng said: "The SMART Campus is the latest addition to our energetic Punggol Kampung. The Campus is designed to meet the learning needs of students and develop 21st century skills. By so doing, every student is afforded an opportunity to get an all-rounded experience for them to excel in the increasingly complex and globalised world. GIIS has struck a good balance between academia and future skills development, with the SMART Campus furthering their commitment."

The SMART Campus provides learning opportunities that focus on individuality, leadership and experimentation amongst.

The "9GEMSTM Model" promotes value-based learning beyond academics through a holistic development framework which emphasises academic and sports excellence, visual and performing arts, personality development, innovation and creativity, entrepreneurship, leadership, universal values and ethics, community and care and overall skill development amongst all students.

Atul Temurnikar, Co-Founder & Chairman of GIIS, said: "Today is a very special day for us as we unveil our SMART Campus to the world. GIIS is committed to nurturing global citizens who are future-ready for any job they choose. The SMART Campus allows us to expose our students to technology and disruption at every step of their educational journey from the day they join GIIS. Our multi curricula offering coupled with 9GEMSTM Model instils four key skills in all our students – critical



From left to right: Mr Atul Temurnikar, Co-founder and Chairman, Global Schools Foundation (GSF) Singapore, Mr NG Chee Meng, Minister, Prime Minister's Office, Adviser and MP for Pasir Ris – Punggol GRC and Mr Jawed Ashraf, High Commissioner of India to the Republic of Singapore. Photo: © Global Indian International School

thinking, communication, collaboration and creativity – that further prepares them for the challenges of tomorrow.

The SMART Campus will leverage proprietary data analytics software to improve learning and teaching outcomes across the school's infrastructure. These include 92 digitally connected SMART classrooms connected with 2GB fibre

networks, more than 40 skills-based studios, 8 SMART science, composite and design technology labs, 4 multipurpose halls for sports and performances, and unique concepts like Student Innovation Rooms, Flipped Classrooms and Learning Commons for collaborative learning.

The SMART Campus is also equipped with technologies such as Sports Performance Enhancing Data Analytics System (SPEDAS) to enhance student performance in sports, and smart features including facial recognition to ensure safety of students across the Campus.

Aiming to have a low carbon footprint, the SMART Campus also champions green initiatives. These include motion sensors, using natural materials like terracotta on the building façade to increase air-con efficiency, and conserving water through all available resources.

The SMART Campus offers multiple International curricula including International Baccalaureate (IB), International General Certificate of Secondary Education (IGCSE), Central Board of Secondary Education (CBSE) and the Global Montessori Programme (GMP). This is the flagship campus of GIIS, which has two other campuses in Singapore at East Coast and Mountbatten. Students benefit from the option of seamless movement across all 23 GIIS Campuses in seven different countries across Asia and the Middle East.



Global Indian International School (GIIS) students awaiting the arrival of the Guest of Honour, Mr NG Chee Meng, Minister, Prime Minister's Office, Adviser and MP for Pasir Ris – Punggol GRC. Photo: © Global Indian International School

Brewin Design Office rounded off 2018 with a series of new projects

Hong Kong – Brewin Design Office (BDO), a Singapore and Hong Kong-based innovative architecture and interior design firm, ended the year 2018 with a pipeline of newly completed projects across Asia, spanning food and beverage, hospitality and visual arts. Comprising highly experienced, talented and creative architects and designers, BDO has unveiled new designs for the Blossom restaurant at the Marina Bay Sands Hotel, the Executive Lounge and Pool Lounge at the Conrad Hotel, the design of an exhibition at the National Gallery Singapore, and two residential projects in Indonesia and Singapore.

Since 2012, BDO has completed over 65 interior and architectural projects and is now translating residential experience into commercial settings for corporate spaces and hospitality spaces from Singapore to China, Hong Kong to Jakarta, Indonesia. Driven by founder Robert Cheng's insights and rigorous approach to design, BDO's values are differentiated from the standard narrative approach prevalent within the region.

"Our studio has evolved from working on small private projects to large regional



Conrad Hotel Singapore Pool Lounge. Photo: © Brewin Design Office

commercial projects. Regardless of scale, we have stayed true to our DNA and approach where we collaborate with artisans and builders internationally to produce bespoke spaces through the exploration of construction processes, function, and fabrication. We have developed a language in the super-

luxury residential space that has been redefined and translated into more commercial settings such as hospitality and corporate spaces. We will continue developing this approach and way of working, to translate the aesthetics of our residential work to different and larger typologies," said Cheng.

Octopus Investments and Edify Energy finance new \$450 million solar farm

Sydney, Australia – Europe's most experienced solar investor Octopus Investments and leading Australian renewable energy company Edify Energy have arranged more than \$450 million to finance what is set to be Australia's largest solar power station at Darlington Point, near Griffith in New South Wales.

Construction of the 333MW DC (275MW AC) Darlington Point Solar Farm will commence shortly. Once operational it will generate 685,000 MWh of renewable energy each year – enough to power around 115,000 homes. Generation is expected to start in early 2020. The project will create nearly 400 direct onsite peak jobs and other opportunities for surrounding communities. It has a long-term power purchase agreement (PPA) with Delta

Electricity for approximately 55 percent of output.

Darlington Point is Octopus Investments' first deal since entering the Australian market in 2018. Managing Director Sam Reynolds said the project exemplified the firm's investment strategy and was a good fit in Octopus' global portfolio of renewable energy assets.

Market leading renewable energy and storage company Edify Energy developed and structured the Darlington Point Solar Farm and are retaining an equity stake in the project. Edify will work with Octopus through construction and will undertake the long-term asset management service for the solar farm through operations.

Alila in Bali achieves zero waste to landfill

Bali, Indonesia – In August 2016, Alila Hotels & Resorts announced the launch of its Zero Waste to Landfill initiative, to be piloted across its four flagship properties in Bali: Alila Villas Uluwatu, Alila Ubud, Alila Manggis and Alila Seminyak. Fast forward to November 2018, all mechanisms for achieving zero waste are now fully established, to meet the goals set when Alila first embarked on this journey. With the implementation of the Zero Waste Policy, Alila Hotels and Resorts now have a zero contribution to the waste situation in Bali.

As in urban societies the world over, much of Bali's waste ends up in overflowing landfills, contributing to the production of toxic methane gas, which is 20 times more potent than CO², and leaches into the farmlands and waterways used by the local communities. Waste that does not make it to the landfill is either dumped on the side of the road, in rivers or ends up in the ocean or washed up on beaches.

Doing its part to address this growing environmental threat, Alila is approaching waste in a whole new way, tackling waste at its source and recycling it into useful resources. The centrepiece of its Zero Waste Policy is an Integrated Sustainable Resource Recovery Facility (iSuRRF), an on-site laboratory where all waste streams are transformed into higher value products and services through a series of simple yet proven mechanical and biological engineering systems.

For instance, plastics, glass and ceramics are shredded and crushed to produce aggregate, sand and fibre that is reused to produce green building materials. Metals and high-value plastics



Photo: © Alila Hotels and Resorts

are recycled. Uneconomical waste plastics, such as wraps and films, are converted into a light crude oil that is distilled down to diesel, kerosene and gasoline for reuse in the hotels.

In addition to the laboratory, each hotel has put in place a composting section and an organic garden. All organic waste is processed into compost and the compost is put back into the garden to produce organic food for the kitchen, from the garden to plate.

Beyond its own zero waste efforts, Alila's hope is to get the community on board and be a catalyst for other businesses. A PIONEER team (Positive Impact on Nature, Environment and Earth's Resources) in each hotel, is not only responsible for upholding the zero-to-landfill status but will also look at ways to encourage local communities and guests to think differently about waste and the impact it has on the environment.

Lootah Real Estate Development hands over "The Waves" residential property

Dubai, UAE – UAE based Lootah Real Estate Development, one of the region's prominent modern real estate developers, announced that the on-time completion and handover of its latest residential project in Jumeirah Village Circle – The Waves. The announcement came during the handover ceremony held on 29 January 2019, which was attended by Lootah Real Estate Development's top management officials and key stakeholders.

Located in Dubai's emerging residential community – Jumeirah Village Circle, one of the most expedient locations providing high standards of living, The Waves residential property offers the essential requirements of communities while ensuring the very highest standards of living. Ranging from areas of 485 to 2,000 square feet, The Waves comprises two elegantly designed modern buildings, offering a total of 135 units including studios, one bedroom, two bedrooms and one-bedroom loft apartments, featuring spectacular amenities



such as a grand lobby, swimming pool, gymnasium and covered parking spaces.

Qujiang Creative Circle becomes first-of-its-kind cultural and creative park

Hong Kong – The Oval Partnership has undertaken the masterplan and design of the first-of-its-kind cultural and creative park in Xian, the ancient imperial capital of China. Slated to complete and open in late 2018, the Qujiang Creative Circle is the culmination of years of our effort in researching and exploring open-air, street-style mixed-use developments.



Qujiang Creative Circle. Photo: © The Oval Partnership

Following the success of Taikoo Li Sanlitun in Beijing and Sino Ocean Taikoo Li in Chengdu, Qujiang Creative Circle will embody the very essence of The Oval Partnership's unique "Open City" planning principles, setting a new standard for experiential retail and urban lifestyle development.

Situated in the National Cultural Industry District along Yan Xiang Lu, the Qujiang Creative Circle will provide 527,000 square metres of mixed-use space including office, retail, residential, entertainment, recreational and public amenities. The site is a discreet mix of the old and new, with famous historical sites including the Big Wild Goose Pagoda, Da Ci'en Temple and Tang Paradise sitting alongside such educational institutes as Xi'an Jiaotong University and Xi'an University of Technology. As such, the Qujiang Creative Circle will serve to bridge the past, present and future, nurture the spirit of creativity, and ultimately become a new destination for cultural and creative industry endeavors in Xi'an.

The Qujiang Creative Circle will encompass all aspects of lives – commercial, residential, recreational and entertainment – that the young and creative millennials across the globe are calling for. The result is an inclusive, sustainable urban ecosystem which caters to the live-workplay lifestyle eagerly sought after by the new generation in Xi'an.

Keppel Land China secures residential site in the Sino-Singapore Tianjin Eco-City

Singapore – Keppel Land China Limited (Keppel Land China), a wholly-owned subsidiary of Keppel Corporation Limited, has secured a 10.97-hectare residential site in the Sino-Singapore Tianjin Eco-City (Eco-City) for a total consideration of RMB 1.07 billion (approximately S\$ 214 million¹) in a public land tender listed on 20 November 2018 by the Sino-Singapore Tianjin Eco-City Investment & Development Co., Ltd. (SSTEC).

The new site will be developed into an eco-community comprising 392 units of terrace houses and 180 units of low-rise apartments. Targeted at upper-middle income homebuyers, the project is expected to be launched in Q4 2019. The total development cost for the project is expected to be in excess of RMB 1.90 billion² (approximately S\$

380 million).

Mr Ben Lee, President of Keppel Land China, said, "The Keppel Group leads the Singapore Consortium in the development of the Sino-Singapore Tianjin Eco-City. Over the past decade, Keppel Land has been participating actively in and contributing to the Eco-City's development. Our eco-friendly homes have been well-received by the market. To date, Keppel Land has launched about 4,500 units of homes in the Eco-City, of which about 98 percent have been sold. A further 346 units of homes will be launched in 2019. We are confident that our new development will continue to attract homebuyers seeking well-located and high-quality green homes."

The site is located within the mature

Start-Up Area of the Eco-City, in close proximity to amenities such as Tianjin Binhai Foreign Language School, Yongding Zhou Cultural Park, No. 1 Community Centre, as well as the mixed-use development, Seasons City, currently being developed by Keppel Land. It is about 20-minute drive away from Tianjin Economic-Technological Development Area, one of the first national-level economic and technological development areas in China.

Upon the completion of the Z4 rail line, the Eco-City's connectivity to other parts of Tianjin will be enhanced.

¹ The exchange rate used is SGD1:RMB 5.

² Land cost is included in the total development cost

Nakheel awards AED35 million construction contract for new recreation centre

Dubai, UAE – Master developer Nakheel has awarded a contract worth AED35 million for the construction of a sports, health and leisure hub at Dubai's Jumeirah Park community.

Featuring an Olympic-size swimming pool, one of Dubai's biggest gyms, a Clubhouse, spa and medical centre, the new destination will combine first-class sports facilities with a range of restaurants, cafes, shops and services to create a health and wellbeing-focused attraction at the high-end community. There will also be parking for nearly 100 vehicles.

Dubai-based GBH International Contracting LLC has been appointed to build the centre, which has a built up area of 93,000 square feet. Construction will begin in October.

The centre will have a range of children's facilities, including a nursery and kids' pool. Retail amenities will include a supermarket, medical clinic, beauty outlets and everyday convenience stores across 46,000 square feet of leasable space.

The Clubhouse – home of the pool, restaurant, gym and spa elements of the complex – is set to become the largest



Photo: © Nakheel

of Nakheel's growing collection of community clubs across Dubai, complementing existing and upcoming clubs at Jumeirah Islands, Jebel Ali Village, Al Furjan, Warsan Village and Jumeirah Village Circle.

Sheikha Fatima Park will be a new urban community space

Abu Dhabi, UAE – IMKAN, the globally reputed property developer renowned for creating soulful places that enrich people's lives, is revamping what was once a walled and almost secret park in Khalidiya in one of Abu Dhabi's busiest districts. Developed by IMKAN, Sheikha Fatima Park will be a revitalised, multi-use space and a hive of community-led activities.

The Abu Dhabi-based place-maker, signed a strategic partnership with the Abu Dhabi City Municipality to support sustainable growth in the capital. The two entities have started to transform the existing Khalidiya Ladies Park, located at the corner of Al Bateen Street and Zayed the First Street, into a dynamic destination for all ages.

At the heart of the Sheikha Fatima Park project, is IMKAN's



desire to promote an active lifestyle, encourage wellness, and bring the community together. Their research-based approach is prominent across the IMKAN portfolio and evident in the re-development of this project. IMKAN is redesigning all aspects of the park to encourage wellness and community activities. The result will be a tranquil urban oasis in one of the city's bustling neighbourhoods.

Construction at the park, with an area of 46,000 square metres is well underway with completion targeted for Q4 2019. Sheikha Fatima Park will consist of an adventure zone, a section devoted to women and children, multiple retail and F&B outlets, activity areas, interactive outdoor and educational zones. There are also 350 parking spaces available along with dedicated facilities for people of determination.

With its prime location and roughly 10,000 square metres of leasable space available for providing one-of-a-kind services in a picturesque setting, the park also offers an attractive opportunity for both regional and global business.

IMKAN is working with Al Fara'a Engineering, who were awarded the main contract for the development of the project. The construction group is one of the region's most established and has been committed to operating in an environmentally and socially responsible manner for over 30 years. Also working as key partners with IMKAN are Arcadis; leading multinational cost and project management consultancy firm committed to sustainable development; and Cracknell Landscaping designers, who are globally renowned for their design solutions.

Vietnam's newest international airport and first international cruise-only port opened the wonder of Halong Bay up to the world

Quang Ninh Province, Vietnam – After two years of construction, Van Don International Airport opened on 30 December 2018 in Quang Ninh province – home to the UNESCO world Heritage site Halong Bay – just 220 kilometres from the capital Hanoi.

This is the first ever international airport in Vietnam to be developed by a private company, namely, Sun Group – the country's premier developer of tourism, leisure and entertainment-focused properties and projects.

With a total investment of VND7.463 billion (US\$310 million), the airport was constructed with the assistance of NACO (Netherlands Airport Consultants), one of the world's leading airport consultancy and engineering firms.

"It is the most modern airport in Vietnam. It will have positive influences on the passengers' experience here in the airport," said Romy Berntsen, a project manager and architect from NACO.

Besides being equipped with the latest airport technologies in the main terminal, and a state-of-the-art runway, the new airport features a beautiful design inspired by the heavenly Halong Bay, which is just 50 kilometres away. As a new gateway for both domestic and international travellers coming to the UNESCO World Heritage



Day view of Van Don International Airport. Photo: © Sun Group

Site of Halong Bay, the airport will receive an estimated 2 to 2.5 million passengers annually for the next two years and five million per year by 2030.

On the same day, Sun Group officially unveiled two more major new infrastructures projects in Quang Ninh, namely, the new Halong-Van Don Highway and Halong International Cruise Port. The new four-lane, 60-kilometres-long highway will reduce travel time from Van Don Airport to Halong city to just under 50 minutes.



Check-in counter at Van Don International Airport Terminal. Photo: © Sun Group

WATG reveals hospitality trends set to shape 2019

Singapore – World leading integrated design firm, WATG, has been breaking ground in hotel design for over 73 years, designing some of the most innovative and award-winning destinations around the globe. As another year ends, and 2019 beckons, Muriel Muirden, Executive Vice President and Global Director of Strategy, shares the top trends in the hospitality and travel sectors, that will be shaping the year ahead, including women-only journeys, 'Voluntourism', the return of 'Slow Travel' and hyper-personalisation.



Muriel Muirden. Photo: © WATG

Girl power

Women are heading out of their comfort zone and seeking new high-octane adventures, including women-only journeys that empower and provide an opportunity to develop new skills and passions. This includes a growing interest in women-only 'voluntourism', that support local women in remote and undeveloped communities around the world. A 2018 survey of US women identified that 73 percent of women felt that travel makes them stronger. Now, 75 percent of cultural, adventure and nature travellers are female.

The road more travelled

By 2030 a mind-boggling 1.8 billion tourists will be on their road to discovery, impacting on heritage icons, must-see cities and outstanding natural environments across the world. A key topic for the year ahead will be how to maximise economic benefits while managing environmental and social downsides everywhere from Maya Bay in Thailand to the Everglades National Park in Florida; this is a global dilemma. Dispersing travellers to new icons and managing flows will require new investment in infrastructure, tourism and hospitality assets and pioneering marketing. Hoteliers need to join forces with governments and have a strong voice in developing solutions and innovative strategies.

It's all about me

Hyper-personalisation and the discovery of bespoke experiences will rise in 2019, as craving the unconventional and the dazzling Instagram moment will be rocket fuelled. From

private dinners with influential local figures to obscure local festivals and events in breath-taking locations, the creation of the 'one-of-a-kind' will have strong resonance in the year ahead. Celebration travel will grow at a rapid pace and become stronger and more innovative in content.

Back to the future

In unsettled times, nostalgia comes back into vogue. In this uncertain and somewhat crazy world, we believe it is back to the future with strong growth in slow travel for 2019 – river cruises, railway journeys, and heritage hotels are all hot topics. Even in the much-stereotyped China market, we are seeing shiny modern hotels losing out to heritage hotels, reflecting a desire to understand and embrace history in a rapidly changing built environment.

Refurbish, repurpose, recycle

As the sharing and resale economy grows apace and we increasingly reject the built-in obsolescence of so much of what we buy, product designers are reassessing product lifespans. So, what are the implications for the hospitality sector? Could 2019 see the first refurbishment strategy where 100 percent of the redesign is built upon repurposed and recycled furniture and fittings? We know of more pipeline brands in concept evolution that will connect with the market through their eco-values.

Other trends for the forthcoming year include brands facing an 'Identity Crisis', as well as consumer's entering a period of 'Food Fanaticism.' Lastly, WATG highlights a trend in hotel resort's landscape using colour therapy gardens to calm guests.

Shipwreck Coast implementation

Sydney, Australia – McGregor Coxall have been appointed to participate in the first implementation phase of the Shipwreck coast masterplan. The \$9.8 million project encompasses lookout facilities at the 12 Apostles and Loch Ard precincts, in addition to a pedestrian bridge over Port Campbell Creek. The design approach recognises the differing characters and demands of each site and adopts a range of conceptual techniques – either subsumed within the natural environment, treading lightly upon the landscape, or creating a bold counterpoint.

The project team, led by Denton Corker Marshall includes Landscape Architecture by McGregor Coxall and engineering services by Arup. McGregor Coxall offer an intimate knowledge of the site having led the delivery of the award winning masterplan, alongside Denton Corker Marshall. The commission follows a limited design competition process managed by the Office of Victorian Government Architect for Parks Victoria.

The Loch Ard Blowhole lookout will be discreetly nestled among the coastal vegetation on the very edge of the blowhole, discreetly hidden from the approaching paths to provide a surprising and thrilling experience.

The Port Campbell Creek pedestrian bridge will sit lightly above water and sand, minimising its visual and physical impact



Image: © Denton Corker Marshall & Arup & McGregor Coxall

upon both the landscape and the town The Saddle lookout at the 12 Apostles, is distinctive and dramatic, perched on top of the cliffs, to fully experience the scale and drama of the magnificent landscape.

Unashamedly angular and artificial, the lookout consists of two tilted 'blocks', one resting on the ground and the other cantilevering out over the cliffs, almost in defiance of nature.

Surbana Jurong builds new campus in Jurong Innovation District

Singapore – Surbana Jurong (SJ), one of the largest urban and infrastructure consulting firms in Asia, held a groundbreaking ceremony on 18 January 2019 for its new campus, which will house its global headquarters in Singapore.

Named 'Surbana Jurong Campus', the 68,915 square metres development will be built in Jurong Innovation District (JID), a vibrant ecosystem of enterprises in advanced manufacturing, urban solutions and smart logistics. The Campus can accommodate up to 4,000 employees and will be completed by 2021.

The Campus will support SJ's rapid growth by facilitating stronger teamwork and knowledge sharing among its Singapore and global talents, and will serve as the nerve centre for research and development of innovation for the built environment as SJ transitions to applied research to create and bring practical and viable solutions to the industry and community.

Designed by Safdie Surbana Jurong, a collaboration between Safdie Architects and Surbana Jurong established in 2017, the Campus will serve to demonstrate what a sustainable, people-centric and future-ready workplace would look like. Created by renowned architect Mr



Surbana Jurong Campus (garden). Photo: © Safdie Surbana Jurong

Moshe Safdie, the design of the new headquarters embodies the character of Singapore as the Garden City by integrating the structure harmoniously with the natural landscape. Situated on a previously undeveloped greenfield site, the Campus will push the boundaries of sustainable design in both construction and operation.

The development will demonstrate SJ's leadership in leveraging Building Information Modelling (BIM) and extending it to a comprehensive Integrated Digital Delivery, or IDD. IDD fully integrates processes and stakeholders along the development value chain through advanced info-communications

technology and smart technologies.

In addition, the Campus is designed to meet Singapore's Building and Construction Authority's (BCA) Green Mark Platinum Certification for Super Low Energy Building. The Campus utilises solar photovoltaic technology which will yield around 340MWH of renewable energy annually, and integrates features such as rain gardens and bio-swale to enhance water sustenance. It also boasts many other green technologies, including smart lighting control, underfloor air-distribution system, and predictive smart building control systems such as live energy and water management dashboards.

Blue Line Park

Busan, South Korea – Home to 3.5 million inhabitants, Busan is the second most populous city in South Korea and extends along the south-eastern coast of the peninsula. Studio Migliore+Servetto, which has been active in Japan and Korea for a long time, is currently working on a redevelopment project here that spans an area of 5 kilometres of disused railway overlooking the sea, which will give rise to a themed park called the "Blue Line Park".

For the design of this vast area – construction of which will begin in 2019 – the architects worked on different narrative levels in order to provide a new waterfront for the city, and at the same time offer visitors a diverse range of activities that will engage users of different ages and interests.



Living movable platform.

In Migliore+Servetto's layout, the theme of re-appraising disused spaces is interwoven with that of landscape architecture. On the one hand, the designers took the historical transformations and the local context and territory into account and decided to maintain a link with the long-established character of the area. On the other hand, their aim was also to rebuild the relationship between humans and nature, transforming the area into a sort of filter between the bay of Busan and the surrounding urban fabric.

"Blue Line Park" is the place where the city is reconciled with the natural landscape, thanks in part to a targeted use of technology and sound design, as well as a new and fascinating cultural hub for events, concerts and collective activities.

The project is part of a strategic territorial action that aims to establish Busan as a meeting point between past and future. It is true that, following Seoul, the face of the future

here seems to coincide with a cutting edge vision of the city. It is important to remember that Busan is a rare stretch of South Korea that was not affected during the Korean war. As a result, since it was not subject to bombing and destruction, it underwent a less organised transformation than Seoul, and for this reason it is still possible to sample real Korean tradition among the alleys of certain districts, such as in the Chungsapo area, which houses a small port of artisans and fishermen.

The linear park designed by Migliore+Servetto unfurls over five kilometres and feature two main entrances, with two new urban squares that serve as a junction with the city. On one side, the narrow side streets of the district, densely packed with artisanal businesses, flow into Mipo Square, while on the other side, the multifunctional space emerges near the old terminal of Songjeong railway station.

Nakheel starts work on Palm Tower rooftop infinity pool – 210 metres above ground

Dubai, UAE – Master developer Nakheel has started constructing the rooftop infinity swimming pool at The Palm Tower, its 52-storey, luxury hotel and residential complex at the heart of Palm Jumeirah in Dubai.

Perched 210 metres above ground and covering 775 square metres, the infinity pool – one of the highest in the world – borders all four sides of the building, boasting unrivalled, panoramic views across Palm Jumeirah, the Arabian Gulf and the Dubai skyline.

The pool – which will hold 930,000

litres of water – is on the 50th floor of The Palm Tower. Above the pool will be a podium housing a 51st level speciality restaurant and a 52nd storey public viewing deck, 240 metres high. Construction of the rooftop dining viewing deck complex will begin soon.

Located at the heart of the world-famous, award winning Palm Jumeirah, The Palm Tower comprises a 289-room St.Regis hotel, 432 luxury residences and an array of dining and leisure facilities. The hotel occupies the first 18 floors, with fully-furnished studios and one, two and

three bedroom apartments on the upper floors. Currently, around 850 construction workers are on site at The Palm Tower, rising to more than 1,500 when internal fit out gets in full swing in the next few weeks. Fit out of the St.Regis – due to open later this year – has already begun.

The Palm Tower is directly connected to the under-construction Nakheel Mall – the access point for the public viewing deck – and its 350 shops, restaurants and attractions. Nakheel Mall, which has its own Palm Monorail station, is due for completion this year.



A rooftop tour, led by Aqil Kazim, Nakheel Chief Commercial Officer, of The Palm Tower construction site on 8 January 2019. Photo: © Nakheel



The Palm Tower's rooftop pool, and the restaurant and viewing deck podium being built above it on floors 51 and 52. Photo: © Nakheel

Equinix invests \$85 million to build fourth data centre in Singapore

Singapore – Equinix, Inc., the global interconnection and data centre company, unveiled plans to expand Platform Equinix® with the construction of its fourth International Business Exchange™ (IBX®) data centre in Singapore, called SG4. The new facility will provide interconnection and premium data centre services to help businesses with their IT transformation and cloud adoption initiatives, while also supporting the digital infrastructure of Singapore. The new \$85 million seven-storey data centre is scheduled to open in Q4 2019, offering an initial capacity of 1,400 cabinets in the first phase.

As an industry leader in Singapore, Equinix has deepened its investments to support the country's Smart Nation plan, reflecting the company's confidence in Singapore's future as a digital hub in Asia. According to the second volume of the Global Interconnection Index, a market study published by Equinix, Singapore's Interconnection Bandwidth capacity – a measurement of direct and private data exchange between businesses – is expected to more than quadruple by 2021, reaching 394 Tbps at a compound annual growth rate (CAGR) of 47 percent.

With an initial investment of \$85.3 million (S\$116.6 million), the first phase of SG4 will provide more than 45,400 square feet (approximately 4,220 square metres) of co-location space, offering an initial capacity of 1,400 cabinets. The facility is planned to accommodate more than 4,000 cabinets at full build out, with a total co-location space of more than 132,180 square feet (approximately 12,280 square metres).

The new SG4 will be strategically situated at the East of Singapore in one of the country's five data centre clusters – Tai Seng Industrial Estate – providing location diversity from the three existing Equinix IBX data centres in Singapore. Directly connected to the three existing Equinix IBX data centres in Singapore via low-latency dark fiber links, the



Rendering: © Equinix

new SG4 IBX will enable customers to securely interconnect with approximately 600 companies from different industries, including financial services, cloud services, biomedical sciences, IT, communications, media, physical sciences and engineering. This also includes a broad range of network services from more than 200 global networks and more than 150 cloud and IT service providers.

Today, the three Equinix IBX data centres in Singapore comprise more than 445,000 square feet (41,400 square metres) of co-location space. In Q3 2018, Equinix announced the completion of an expansion of the SG3 IBX data centre in Singapore that nearly doubled the size of the facility. As part of Equinix's commitment to its long-term goal of using 100 percent clean and renewable energy and lowering its carbon footprint for its global platform, the Equinix SG1 IBX data centre is BCA-IDA Green Mark certified, while the SG2 and SG3 IBX data centres have received the Gold^{PLUS} and Platinum awards, respectively.

Yaniv Pardo Architects design stunning coffee shop for Sacker Park in Jerusalem

Tel Aviv, Israel – Initiated by The Jerusalem Development Authority, this project stemmed from winning the *Design Competition Of The Jerusalem Open Space and Governmental Area* in 2008. The background for the competition was the lack of a central urban park that would serve as a "green lung" and a place for diverse activities; a space that would form educated synthesis and maximal interaction between government

institutes, culture, recreation and leisure for both local citizens and guests.

The project's site covers over 170 acres and is located near the capital centre of Israel: the Knesset, the Supreme Court and Kiryat Hamemshala (the government buildings compound). The park holds high potential. It hosts many activities, but they are separate, specific and lack context and continuous connection



Photo credit: Amit Goshier (photographer)

between the various elements in the site. The directive was to propose a "local language" without harming its identity and by amplifying its "Jerusalemness".

Yaniv Pardo Architects' design does not deal with planning a defined structure. It aims to study, expose and understand the issues of planning in the Sacker Park site, focusing on the question of what kind of intervention would be suitable for this

site in order to turn it into a lively point in city life. The open space defined by this project creates a landscape system that allows the masses, locals and tourists, to enjoy its beauty.

The coffee shop is part of the overall vision of planning the entire space with the intention of rebranding Sacker Park as a modern and active urban space by building a coffee shop and an amphitheater for public events. The project also proposes the development of a promenade overlooking the park. The promenade takes part in establishing a structure that connects and rearranges the landscape, and sets an infrastructure for future development.

The inspiration for the promenade, which faces east and allows an actual architectural linkage between the old city and the western modern one, draws from the image of Jerusalem over the generations and research of the natural topographical data. In order to reveal the urban solution that both characterizes and preserves the image of Jerusalem, we tried to expose the original surface conditions and read them following the natural topography of the wadies.

Furthermore, the project adheres to green building principles – the energy required for operating the coffee shop is produced by solar cells that roof the sitting area. The coffee shop is the first milestone of the proposed project, completed in September 2018.

SIA announces its Call for Entry for Founders' Memorial International Architectural Design Competition

Singapore – The Singapore Institute of Architects (SIA) has been appointed to organise and launch the Founders' Memorial International Architectural Design Competition in Singapore on 10 January 2019.

This is a two-stage international architectural design competition launched by the National Heritage Board, Singapore, to invite design proposals for the Founders' Memorial. The Founders' Memorial will be an integrated gallery and garden experience to honour the legacy of Singapore's founding generation of leaders, strengthen Singaporeans' sense of solidarity, and inspire future generations to reflect on the ideals and values upon which Singapore is built. It will be sited at Bay East Garden, and be a development with significant civic presence, integrating architectural and



landscape design, and be accessible to all visitors.

SIA is happy to announce its Call of

Entry for the competition. **Visit www.foundersmemorialcompetition.sg for more information.**

Masahiko Fujimori Architects completes minimalist residential project in Hiroshima City

Hiroshima, Japan – The site of the project called 'Chronos Dwell' is located in the northern part of Hiroshima City, surrounded by low mountains. The area has currently both of traditional single-family housing and mid-to-high-rise multi-family housing around a bus terminal along stations while farms used to be scattered throughout the residential district.

With easy access to city center and a safe, friendly atmosphere, the area is attracting a growing number of young families resulting in an increasing residential population.

Following this trend, Masahiko Fujimori Architects converted farmlands on this project site into rental apartments. From the beginning of this project, the architect developed the business plan with a contractor and estate management company and decided to build a residential complex of 15 family rental apartments. Considering the mass of 15 apartments, the architect aimed to reduce a feeling of oppression by making a building volume slightly smaller than surrounding buildings. On the ground floor, volumes are arranged to create 'square space' and 'path space' connecting to each unit.

Because the whole volume of 15 apartments is too large for residents to consider it a community, the architect divided it into four communities, each of which includes a 'square'. Every apartment is designed to face the 'square' creating small communities.

A part of the path connecting these squares is a buffer space between inside and outside of each apartment, which could also serve as a porch partly belonging to the apartment.

The volumes of lower and upper tiers are staggered in arrangement. Its space hosts an exclusive terrace belonging to each apartment. Varying floor heights and vegetation preserve privacy for residents. The varying floor heights also create loft



Photo copyright of Shigeo Ogawa

spaces which are not counted as occupied space and add value to the apartments.

Maintaining natural light from each side and good ventilation in each duplex apartment, the residential complex provides residents a level of privacy and independence comparable to single-family housing.

In the rental apartments, of which resident turnover flows higher than single-family housing and condominiums, the square and path help develop a sense of community within the site. The architect hopes that this residential complex is a catalyst for stronger local community connection and environmental improvement beyond the site.

Architect'19 to put Thailand at the forefront of green architecture in ASEAN

Bangkok, Thailand – The Association of Siamese Architects under the Royal Patronage (ASA), in cooperation with N.C.C. Exhibition Organizer, announced the plan to hold Architect'19 Living Green, which will take place between 30 April – 5 May 2019 spanning over 60,000 square metres at Challenger Hall 1-3, IMPACT.

Ajaphol Dusitnanond, President of the ASA said, "ASA's Architect Expo is

the largest expo of its kind in ASEAN. It has been hosted annually by the ASA since 1986. The purpose in this 33rd year remains to be a stage in which potential and progress in the field of architecture are to be displayed to the public. Meanwhile, it also aims to create an awareness regarding social roles and responsibility among architectural practitioners through exhibitions and activities in the event. Last year's

success was proven by achieving over 400,000 visitors."

The Architect Expo showcases wide-ranging products for architecture, interior design, and landscape architecture. It includes exhibitions, activities, international conferences, and services, which are open to ASA's members as well as the general public.

ASA introduces a new concept for the Expo each year to reflect global ever-



changing concerns. This year's concept is 'Living Green', which endorses an eco-friendly approach to architectural design with a view to achieving sustainable living.

On the same day, Dr Acharawan Chutarat, the Chairperson of the Architect'19 committee, spoke about the theme: "Irregular extreme weathers resulting from the global warming condition have so much perverse impact on the economy, society, and quality of our lives in the world. It is one of the most pressing issues that requires experts, especially those whose work directly impacts the environment like architects, to urgently find a solution – whether in design, materials, or methods.

"Architect'19 Living Green examines the idea of sustainability in architecture and design through thought-provoking exhibitions and activities. It considers aspects such as the use of innovative and also environmentally-friendly materials, the combination between local wisdom and modern technology, to hopefully find a solution which is suited to the current situation.

"The Expo will offer a "green experience" for the first time. The idea of sustainability is employed in every detail of the event; using eco-friendly materials, energy-efficient lighting in the exhibition area, reducing the use of paper, employing more effective management of the waste

produced during the Expo, and recycling some of the waste."

Architect'19, which spans an area of 60,000 square metres, has two main zones: an exhibitor zone and an activity zone. While the former contains retailers of more than 850 brands, the latter is dedicated for themed exhibitions and an abundance of activities for the public, including:

'Green Building Showcase', an exhibition about eco-architectural design by Asia's leading designers; 'Wisdom from 3 Regions in the Modern World' which finds a possible sustainable solution from old innovations; exploring a life without waste in 'Go Zero Waste'; and 'Innovative Green Products' which features a selection of environmentally friendly building materials.

There is an opportunity to compete for 280,000 THB in the ASA International Design Competition 2019. The topic of this year, 'Uncanny Sustainability', looks for an outstanding and original sustainable design. The competition is open not only to architects, but to any interested members of the public from all over the world.

In addition, for the public visitors they also prepare activities, workshops, and a common area for leisure with some events for entertainment throughout the expo, including the ASA Clinic (Mobaan ASA), which will be available for those

who have problems with houses and house design.

Another main annual event that can't be missed is an international architecture conference ASA Forum 2019. Speakers include many famous architects and designers such as architect Nico Kienzl from New York's Atelier Ten, who is an expert in high-rise building technology, along with architects from Foster + Partners, Eco Architect, and S/T/U/do.

Architect'19 is made possible with the support from many alliances such as the Thai Health Promotion Foundation, National Innovation Agency (NIA), Australian Embassy Bangkok, Thai Green Building Institute, and some private partners who value the idea of sustainability. The largest eco architecture and design expo in ASEAN is expected to draw 25 percent more visitors than last year's event.

Sakchai Pattarapreechakul, President of N.C.C. Exhibition Organizer (NEO) and one of Architect'19's committee members, revealed the latest progress of the event. On the first aspect, around 80 percent of the 60,000 square metres exhibition area has been booked, accounting for 850 companies.

Both domestic exhibitors and those from abroad, as far as USA, Germany, and Australia are among them. Some come from closer locations such as South Korea, Taiwan, Singapore, and Hong Kong, as well as the neighbouring CLMV countries, which are the main target of NEO.

Brands set to participate include Jaraka, L & E (Lighting and Equipment), Modernform, Hafale, Canon, Mitsubishi Electric, BOSCH, 3M, and Modern Glass. The second aspect focuses on special arrangements which are intended to facilitate the exhibitors to expand their businesses into the ASEAN market and conversely to export Thailand's and ASEAN's products to other regions. Several services have been prepared for B2B business pairing. For example, overseas buyers and associations related to architecture and property development have been invited to the networking event.

For more information, visit www.asa.or.th/architectexpo.

dormakaba launches exivo – a customised access solution for small to medium sized businesses

Singapore – exivo from dormakaba is a new holistic access control solution, which provides utmost security, convenience and flexibility to small- to medium-sized businesses. No matter what your security motivation is and what an access solution needs you have – with exivo one thing is sure: it will all be easy and convenient.

Critical doors are secured and monitored by electronic and wireless locking components in proven dormakaba quality. Complete control over access

media ensures maximum security and flexibility. Access rights can be changed or cancelled for individual employees at any time. All other doors are secured as usual with keys and mechanical locking systems, which can also be managed over the exivo system.

exivo is run over the web-based exivo platform, accessible to you and, if necessary, your exivo partner. You decide which tasks you wish to manage yourself and which should be hosted by

your exivo partner. No server, additional computer or software are required on site. dormakaba developed exivo especially for companies that need an access solution, but don't want to waste time on managing it. After all, you prefer to focus on your core business – and not on organising access control solutions. Even if your exivo partner manages everything for you, you will always have full cost control with no unpleasant surprises – thanks to fixed running and service rates.

exivo offers users six great benefits:

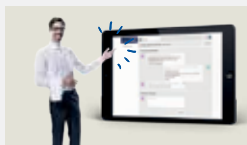


(1) Easy planning and fast assembly

- Easy planning and configuration over the web-based exivo platform
- Fast installation with no interruption of daily business
- Straightforward commissioning – thanks to the central exivo platform no special software or server is necessary on site

(2) Easy control and convenient operation

- Hassle-free 'full-service' operation by your exivo partner or do-it-yourself
- Assign and change rights over the easy to use exivo platform
- Access anywhere there is Internet access and have complete control over smartphone, tablet PC or computer

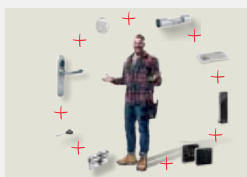


(3) Easy service and fast solution

- Easily send service requests to your exivo partner over the exivo online platform
- Straightforward communication with exivo partner over the integrated online support messenger
- Automatic component status messages for early service intervention
- Direct access to component fault messages by the exivo partner and remote trouble-shooting possibilities

(4) Easy billing and full transparency

- Low initial investment so it doesn't break the budget
- Predictable expenditure due to the same monthly costs
- Fair cost structure as you only pay for what you need



(5) Easy expansion and comprehensive security

- Easy expansion and upgrading as the system will develop, along with the company
- Retrofits for every door and other lock types
- Integrated key and mechanical lock management
- Integrated management of keys, cards and other access media and their users
- exivo can even manage the mechanical key systems of our providers

(6) Easy updating and always secure

- Ongoing development of the web-based exivo platform will include functionality upgrades
- Immediate availability of updates over the automatic update function of the central exivo platform
- Maximum security thanks to the exivo platform central management system on secure protected servers



KPF unveils design for Azrieli Tower, tallest building in Tel Aviv

New York, New York, USA – Kohn Pedersen Fox (KPF) is pleased to share its design for the Azrieli Tower, a landmark project for Tel Aviv. The 340-metre building will become the apex of the renowned Azrieli Center, introducing vibrant, mixed uses to the city's business district and energising the skyline with its unique, aspirational form.

Working with the Azrieli Group and MZA, KPF paid thoughtful attention to the composition of the larger complex, which includes a trio of perfectly square, circular and triangular towers. An elongated circle in plan, the new tower's elliptical footprint references this purist geometry, respecting the architecture of its neighbours while establishing a dynamic, new identity.

In formal profile, the tower takes the form of a spiraling scroll weaving around the existing retail base and towers at the ground level. Further up in the composition, the façade wraps around the shaft of the new tower, narrowing as it ascends to create optimal office floorplates and scaled to accommodate



Photo: © KPF

residential and hotel functions with a large event space at the top.

Overall, the mixed-use building will integrate 65,000 square metres of office, 17,000 square metres of residential, 15,000 square metres of hotel, and 15,000 square metres of retail space. Near its pinnacle, the tower will include a public space for gathering and entertainment. As the city's tallest building, the Azrieli Tower

will offer unparalleled views of Tel Aviv, from its historic neighbourhoods and the Mediterranean Sea to Jerusalem on a clear day.

This project represents a significant step in establishing Tel Aviv's architecture on an international stage by introducing KPF's expertise to a rapidly developing urban area. In addition, the high density site incorporates multiple nodes of public transportation, including a future high-speed rail line to Jerusalem, a metro rail and a new subway under construction, and a system of bike lanes and designated bike spaces.

BDP joins forces with leading Canadian practice

London, UK – BDP has made a strategic investment in Toronto-based Quadrangle, one of Canada's most respected architecture and interior design practices. The partnership will create a platform for continued international growth in key markets and sectors across Canada and North America.

John McManus, Chief Executive of BDP said: "Quadrangle supports our strategy to grow operations in the Canadian marketplace and greatly enhances our expertise and resources. The addition of a 200-strong studio in one of North America's largest cities will not only provide exceptional opportunities for our people, it will also enable both BDP and Quadrangle to expand our services into new regions. BDP's collective grouping of professions design with a progressive outlook and a sensibility towards the creation of a sustainable and human environment. We are confident that

our culture and ethos will be greatly enhanced by the addition of Quadrangle. We are also delighted to welcome four of Quadrangle's Principals to the BDP Group Board."

Quadrangle Executive Principal, Anna Madeira, said: "We are incredibly excited to join BDP. This partnership infuses our business with greater expertise, services and resources that we can offer to our clients, and it enables us to provide our staff with increased opportunities to work on diverse projects."

Quadrangle is currently completing the Yonge-Sheppard Centre, a large mixed-use development in North Toronto; 80 Atlantic Avenue, Toronto's first wood office building in over one hundred years; and Downtown Markham, a large scale mixed use development featuring retail, housing, office and hospitality in a progressive urban setting.

BDP is currently providing full interdisciplinary design services to restore



In Toronto, BDP has designed a three-level retail podium for RioCan at The Well – a large mixed-use commercial development, currently under construction. Photo: © BDP

and safeguard the future of the Palace of Westminster, the seat of the United Kingdom's parliament. In Toronto, BDP has designed a three-level retail podium for RioCan at The Well – a large mixed-use commercial development, currently under construction.

Hashim Sarkis appointed curator of the Biennale Architettura 2020

Venice, Italy – The Board of La Biennale di Venezia has appointed Hashim Sarkis as Director of the Architecture Sector, with the specific task of curating the 17th International Architecture Exhibition to be held in 2020.

Sarkis is the principal architect of Hashim Sarkis Studios (HSS), established in 1998 with offices in Boston and Beirut, and Dean of the School of Architecture and Planning at the Massachusetts Institute of Technology (MIT) since 2015. He was member of the international jury of Biennale Architettura 2016, and participated with his firm in the Pavilion of the United States (Biennale Architettura 2014) and Albania (Biennale Architettura 2010). Sarkis earned a Bachelor of Architecture and a Bachelor of Fine Arts from the Rhode Island School of Design, and a Master of Architecture and a PhD in Architecture from Harvard University. He is the author and editor of several books and articles on modern architecture history and theory, including *Josep Lluís Sert, The Architect of Urban Design* (New Haven, CT: Yale University Press, 2008); *Circa 1958, Lebanon in the Projects and Plans of Constantinos Doxiadis* (Beirut: Dar Annahar, 2003); and *Le Corbusier's Venice Hospital* (Munich: Prestel, 2001).

Paolo Baratta, President of La Biennale di Venezia stated: "We have appointed the Curator of the next Biennale Architettura 2020, within the timeframe needed for organising the Exhibition and in respect of the norms which govern La Biennale. With Hashim Sarkis, La Biennale has provided itself with a Curator who is particularly aware of the topics and criticalities which the various contrasting realities of today's society pose for our living space."



Hashim Sarkis. Photo by Bryce Vickmark

"The world is putting new challenges in front of architecture," stated Sarkis. "I look forward to working with participating architects from around the world to imagine together how we are going to rise to these challenges. Thank you President Baratta and La Biennale di Venezia team for providing architecture this important platform. I am both honoured and humbled," added Sarkis.

The Board also approved the dates of the 17th International Architecture Exhibition to be held from 23 May 2020 to 29 November 2020; pre-opening 21 and 22 May 2020 and opening to the public on Saturday, 23 May 2020.

The winning competition proposal for Amager Nature Park has been named

Copenhagen, Denmark – As part of an ambitious project for Amager Nature Park near Copenhagen City Centre, the large nature reserve will acquire seven new recreational landmarks. The Partnership behind the development has just announced Møller & Grønborg with ADEPT, SNC- Lavalin Atkins and BARK Rådgivning as the winning team of the project competition.

With the seven new landmarks – three of which consist of iconic main entrances at the edge of the city and four of which are situated at the water's edge – Amager Nature Park will acquire new recreational destinations that will



Visual: © Møller & Grønborg + ADEPT

facilitate a wide range of different nature experiences and outdoor activities. These recreational landmarks will help support a coherent and visually holistic experience of the 35 square kilometres large nature reserve and contribute to the park's future ambition of becoming an even more popular nature reserve destination than it is already today. The project programme for Amager Nature Park is supported by the foundation Nordea-fonden with DKK 55 M and the Danish Outdoor Council's funding programme for outdoor life with DKK 5 M.

The architectural vision behind the winning proposal is to strengthen Amager Nature Park's existing expanse of urban nature reserve, while still respecting the history and landscape of the park. Each new landmark creates a new destination with new or better possibilities for recreation, nature experiences, peace and contemplation, play and learning – for everyone. With reference to the reserve's existing character, the DNA of the Nature Park, the future landmarks are composed on a simple design vocabulary, which is the foundation of the project. This vocabulary serves as a guideline for building in the landscape, the choice of materials and the dynamic between the protected nature and culture, etc. The



Visual: © Møller & Grønberg + ADEPT

seven new landmarks can be further supplemented by a subtle wayfinding system that marks the way in, out and around the nature reserve landscape. As the park covers an extensive and varied area of close to 35 square kilometres, creating coherence throughout the park is both the challenge and the potential in the project.

The project has a subtle architectural language with identifiable constructions and wooden roof forms, which visibly stand out and invite visitors to stop and engage in various activities – without stealing the focus from the breath-taking nature. Each landmark emphasises a

special place in the landscape as well as the contextual qualities and nature found at exactly that place.

Collectively, each landmark visually borders the huge and varied nature reserve and strengthens the Nature Park with a consistent architectural expression. The three new main entrances will be placed at the existing visitor centre Amager Nature Centre, Asger Jorns Allé and the media town, DR Byen, and will help mediate nature and invite the visitors into the nature park. The four future coastal landmarks will strengthen nature experiences and water activities, such as kayaking and bathing.

AIA recognises John Portman & Associates for Design Excellence

Atlanta, Georgia – Atlanta, The Shanghai Chapter of the American Institute of Architects has bestowed upon John Portman & Associates the Honor Award for Heritage Architecture in recognition of design excellence in the preservation, restoration and adaptive re-use of the Jian Ye Li site, part of what was previously known as the French Concession District in Shanghai.

Jian Ye Li, a French construction company, established the site to house the company's workers and their families, and, although Chinese in style, the complex was originally designed by a French architect. The 250,000-square-foot (23,000-square-metre) project divides its linear tenement structures into West, Middle and East portions. The

Middle and East portions were completed in 1930 using simple structural designs and basic materials. The West portion, completed in 1938, incorporated larger unit floor areas, partial upper levels, and a more decorative use of materials. All units enjoy a Southern orientation enhanced by the Shanghai "Shikumen" or "stone framed door lane" transitional entry sequence. It is this uniquely functional aspect of the Shikumen house that creates the comfortable human scale and intriguing spatial relationships.

The 2018 Honor Award for Heritage Architecture acknowledges a prolonged labor of love. For John Portman & Associates, the Jian Ye Li journey first began in 2004 when the firm's concept won an international design competition.



"We approached this special project with great honour and heartfelt appreciation," stated Jack Portman, FAIA, Chairman and CEO of John Portman & Associates.

Consortium with Expomobilia wins contract for the Dubai EXPO 2020 Dutch Pavilion

Zurich, Switzerland – A consortium comprising Expomobilia, V8 Architects, Kossmann.dejong and Witteveen+Bos has been selected to design and construct the Dutch Pavilion at EXPO 2020 in Dubai. The award was made following a European tender procedure with a total of 11 consortiums participating.

The winning bid will give the Netherlands a Pavilion that stands out when it comes to circulation and the use of innovative, sustainable technologies. The Pavilion is to feature a circular climate control system, seamlessly integrating it with the Netherlands' chosen theme: "Uniting water, energy & food". Visitors from both the private and business spheres will be treated to an intense sensory experience of natural phenomena, while the overall architectural appearance is to be a statement in the Dubai surroundings. In addition to designing and constructing the pavilion, the consortium will also be responsible for circular maintenance and dismantling. The design will be presented in December 2018.

The consortium brings together the necessary expertise for the project, with experience in pavilion construction (Expomobilia), architecture



Photo: © Dutch Pavilion Consortium

(V8 Architects), interactive visitor experiences (Kossmann.dejong), and integral installation and construction engineering (Witteveen+Bos). The team can also boast a strong network in Dubai and close collaborations with Dutch start-ups and innovations.

The 35th universal exposition will take

place in Dubai from 20 October 2020 until 10 April 2021. This will be the first time an international exposition is held in the Middle East. Some 170 participating countries will present ideas, innovations and technologies inspired by the Expo theme "Connecting minds, creating the future".

New head office Big Green Egg Europe by Team Paul de Vroom + Sputnik creates its own sustainable context

Rotterdam, The Netherlands – For the high-end office building of Big Green Egg Europe, Team Paul de Vroom + Sputnik has created an all-encompassing total design in which the architectural, interior and furniture design fit seamlessly together and reinforce each other. The building has a robust exterior and a light and attractive interior organised around the central patio. The high-quality materials and finishes underline the quality level and the appearance of the Big Green Egg brand. The building is sustainable in the broadest sense. It generates its own electrical power supply, heat and cold and it contributes green roofs to the environment. Due to its timeless design, flexible plan and application of honest materials, the building has a durable aesthetic.

Big Green Egg manufactures high end Kamado's, ceramic

barbecues. The office in De Lier (The Netherlands) delivers to European importers in 42 countries. The kamado is a typical product from the experience economy and it represents a certain lifestyle. Therefore, the company is foremost focused on marketing and events. To enhance the creative process, an inspiring work environment is necessary in an open setting. Besides that, a high-quality outdoor space is essential to welcome the resellers and importers and to demonstrate the "Eggs".

Team Paul de Vroom + Sputnik created a building with a pure main form, a natural spatial design and use of specific materials. The building consists of a dark square volume in two layers, that by its clear simplicity puts itself firmly between the nondescript warehouses in the industrial context. Around the



Photo: © Ossip van Duivenbode

building the facade only has some continuous, floor to ceiling high windows with slender steel frames at relevant points, the rest is massive brickwork.

A barbecue happens outside, therefore the outdoor area is designed in close relation with the building. A square patio is centered in the building. Its floor level is halfway the ground floor and the first floor. This allows all the representative spaces on the ground floor and the office spaces on the first floor a direct relation to the self-created outdoors. A full-grown tree marks the middle of the patio and provides comfortable lively shade from the sunlight all through the building.

In the interior, the design and layout of each room is tailored to the specific use. This can be a formal reception, a group brainstorming session or a private phone conversation. The different representative spaces logically follow each other, flow into each other and eventually lead to the outdoor spaces. Consistently natural, high-quality materials have been used in the interior.

For the more confined spaces in the building, where private conversations and meetings are held, special dynamic wall furniture have been designed. In the boardroom a complete wall is covered with a felt artwork, which makes both the atmosphere and the acoustics pleasant.

Grimshaw welcomes the announcement of the transformation of JFK International Airport

New York, New York, USA – Grimshaw has welcomed Governor Andrew Cuomo's announcement of a \$13 billion plan to transform JFK International Airport into a world-class 21st century airport including \$12 billion of private investment.

The governor's office noted that in September 2017 a master planning team for the redevelopment of the airport had been selected, led by Mott MacDonald and Grimshaw Architects. The team's previous master planning and redevelopment projects have included airports in London, Singapore, Hong Kong, South Korea, Germany, the Netherlands, Canada, and Australia.

The \$13 billion announced on 4 October 2018 for the revitalisation plan includes the following:

- A new terminal complex on south side of the airport, including the replacement of Terminals 1 and 2 with a new 2.9-million-square-foot terminal served by 23 international gates.
- A new terminal complex on north



Rendering: © Grimshaw Architects

- side of airport, including a new 1.2-million-square-foot terminal connected to the existing Terminal 5. The new terminal will offer 12 international gates, all of them able to serve larger wide-body aircraft.
- A request for proposals for Kennedy Central, a new commercial development at the heart of the airport.
- Two "ring roads," a north loop and a south loop, allowing easier access to

the airport and the two new terminal complexes.

- Highway improvements designed to ease bottlenecks and reduce travel time from midtown Manhattan.
- A 50 percent capacity increase for JFK's AirTrain system, and increased frequency of service.

The first new gates are expected to go into operation in 2023, with the completion of the project in 2025.

Monroe Blocks, downtown Detroit's most significant mixed-use development in decades by Schmidt Hammer Lassen Architects, breaks ground

Detroit, Michigan, USA – On 13 December 2018, Schmidt Hammer Lassen Architects broke ground on its first U.S. project, Monroe Blocks, a mix of modern office space, residential units, restaurants, retail, and outdoor public areas that will stitch together the heart of one of America's most storied cities.

Located on the northeast corner of Detroit, Michigan's popular Campus Martius Park, the 12,500-square-metre site has lain vacant for a generation until now. The project spans two city blocks and includes the first high-rise office tower to be built downtown in more than 25 years, as well as 4,800-square-metres of public outdoor space.

Campus Martius Park is a popular destination located a few blocks from the Detroit River where people-watching, ice skating, and outdoor concerts take place. Along Monroe Street, one of the major thoroughfares that radiate from the park out towards the surrounding suburbs, lies Monroe Blocks, a masterplan project awarded

to Schmidt Hammer Lassen by Bedrock, the largest real estate developer in downtown Detroit. Monroe Blocks is one of the most prominent addresses within Bedrock's portfolio and a unique addition to Schmidt Hammer Lassen's portfolio of projects.

Schmidt Hammer Lassen, working together with local architectural firm Neumann/Smith Architecture, imagined a master plan that reintroduces historic alleyways and public access points, while prioritising the public realm by connecting the outdoors with each structure's ground floor. The Monroe Blocks scheme aims to connect the surrounding downtown districts, restore density and a variety of uses to the heart of downtown with iconic design, and create new vibrant public spaces with retail, food, and entertainment for a diverse mix of residents and visitors.

Sustainability is a priority throughout Monroe Blocks, which was designed as a LEED-certified district. The office tower is designed to be Detroit's first WELL



Photo: © Hayes Davidson

Certified building. The Monroe Blocks development is scheduled to complete in early 2022.

MVRDV completes first project in India, Future Towers

Rotterdam, The Netherlands – Located in Pune, India's 8th largest city and one of the fastest-growing cities in the country, Future Towers provides 1,068 apartments for a diverse section of the rapidly expanding population, a true vertical village that will house around 5,000 people in one building.

Future Towers is a part of Amanora Park Town, a community created in 2007 thanks to legislation passed in 2005 by the state of Maharashtra to encourage the development of residential "townships" near its cities. In Pune, these townships help to house the young professionals attracted to the city by its auto-manufacturing and technology sectors but, as with much of the rapid development all over India, many of the new buildings on Pune's outskirts are generic, repetitive residential towers. In just 11 years, Amanora Park Town has grown to over 25,000 residents by focusing on a diverse, high-quality mixture of towers alongside low-density villas. But the pressure to expand faster with more high-density, low-individuality housing was ever-present.



Photo: © MVRDV

MVRDV's design for the Future Towers aimed to offer an alternative to this pattern, while still delivering apartments at the usual low price (since competition for new residents between different housing developments is fierce). Instead of a cluster of freestanding buildings, MVRDV's response to the brief was a singular mountainous structure with peaks and valleys, under which 1,068 apartments are unified in one building. However, despite its expressive appearance, the design of Future Towers in fact stems from a series of methodical decisions based on MVRDV's research into Indian housing.

A critical deviation from the norm was to convince the client that the entire development would be more vibrant with a mixture of different units. This way, the building would ensure that users from the full spectrum of India's exploding middle class all mingle – including young, mobile professionals who are new to the city; older, established residents; and families both large and small, all at a range of income levels. Apartments ranging from 45 square metres to 450 square metres are mixed together, a diversity enabled by the building's mountainous

shape and the shifting floor plans that it generates.

In Asia cities are growing so fast, and uniform repetitive residential towers are the norm," said Jacob van Rijs, Principal and Co-Founder of MVRDV. "With our design, we are making an effort to offer more variety and bring people from more different backgrounds together. In the original master plan, 16 separate towers were planned, all of which would have more or less the same type of apartments. The MVRDV team thoroughly researched modern Indian housing and came up with a system to create a mix of different types of apartment inside one building. This project will attract residents with a variety of incomes, something that will benefit the diversity of Amanora Park Town. Thanks to the client's willingness to try something new, the efficiency needed for mass housing has been achieved without cutting back on residents' comfort."

The completed building is just the first phase of the larger Future Towers project at Amanora Park Town, which comprises 3 phases and around 3500 dwellings in total. MVRDV is currently working on the second phase of the project.

Goettsch Partners and Lead8 design third mixed-use complex and tower for China Resources Land

Chicago, Illinois, USA – Goettsch Partners (GP) has announced the start of construction for Changchun CR Center, a major mixed-use complex with a striking 300 metre (980 foot) tower in Changchun, the capital city of China's northeastern Jilin Province.

Designed by GP with international architecture and design firm Lead8, the project represents the third collaboration of the two design firms with developer-owner China Resources Land Limited, the previous two efforts leading to new city-making projects with multiple buildings and significant civic and economic impact in the Chinese cities of Wuhan and Hangzhou. In Changchun, GP is designing the main tower, and Lead8 is designing the retail and entertainment centre.

Plans for the development of the eight-acre (34,000-square-metre) parcel in Changchun comprise multiple towers, including office space, high-end residential units, and fully furnished serviced apartments. In addition, new "signature spaces," including a 66th-floor observation deck at the tower's luminous crown, are designed to draw visitors to the site overlooking the adjacent Mudan Yuan park and lake. The Changchun CR Center will be anchored by an innovative, 1.8 million-square-foot (170,000-square-metre) retail and entertainment complex. CR Land will occupy the 63-storey, 1.5 million-square-foot (140,000-square-metre) office tower



Photo: © Goettsch Partners

with its own regional headquarters, with direct connection to the subway.

Slated to open in 2021, the complex and signature tower for Changchun CR Center will bring a distinctive façade and a highly visible illuminated crown to the city's skyline – a bold statement that will define a landmark in the developing metropolitan area, which is home to about half of the region's total population of 7.7 million.

Adrian Smith + Gordon Gill Architecture announce competition win

Chicago, Illinois, USA – Adrian Smith + Gordon Gill Architecture (AS+GG) announced their competition win for the Shimao Shenzhen Longgang Master Plan and the associated tower, Shenzhen–Hong Kong International Center. Set between the foothills of Longcheng Park and the Dayun National Park, the site is adjacent to several major sporting venues. The graceful new tower references anthropomorphic characteristics, offering a new sculptural icon for northwest Shenzhen's skyline.

The new tower is located at the centre of AS+GG's Shimao Shenzhen Longgang Master Plan and is the main focal point for every office and apartment building within the development. It is envisioned as one of the tallest towers in the world, at approximately 700 metres, and will serve as a symbolic icon for the new district. In the evenings, the tower itself will be a visual, sound, and light show, reinforcing the district's athletic and entertainment purposes. The tower's top has one of the world's highest observation experiences and additional club facilities that include a restaurant, a night club, spa services, and a grand swimming pool, all with views of Shenzhen and beyond.

The mixed-use district that surrounds and connects with the tower contains a five-star hotel, offices, and conference facilities. A major retail facility defines the northeast corner of the site, while a community of apartment towers occupies the northwest section. The master plan integrates a dynamic new public realm that combines cultural and retail programs anchored by a cultural center and a main library. Programmed venues have open and enclosed spaces for recreation, leisure, tourism, art, dining, and social gatherings. Beautifully landscaped promenades connect patrons and visitors to every aspect of the activity.

The environmental goal for the Shenzhen–Hong Kong International Center and the surrounding landscape is to obtain LEED Platinum certification, therefore sustainability is considered in a holistic way: High-performance glass will be used to reduced heat gain; Buildings are oriented to respond to



**Photo: ©Adrian Smith + Gordon Gill Architecture
Adrian Smith and Gordon Gill – Design Architects of the project
Adrian Smith + Gordon Gill Architecture – Design Firm for the project.**

existing environmental solar conditions for enhanced passive solar control; Strategic natural lighting for the interior spaces increases human comfort levels; The development was designed so that winds predominantly from the east and northeast are funneled into the open spaces to provide natural ventilation throughout the site and improve outdoor thermal comfort; The complex also will have a major public transportation center and bus terminal to move large groups of people to and from the site efficiently.

Water management was particularly important when designing the site. Shenzhen is known for heavy rains and flooding during the summer months, so it was crucial that the site can manage 100 percent of a 100-year storm event. Landscape features are designed to manage heavy rainfalls using engineered soils, retention ponds, native plants, and foliage as a network of systems that will recycle the rainwater for irrigation and other uses.

ONLY IF completes Bryant Park retail location for City of Saints Coffee Roasters

New York, New York, USA – Only If, a New York City-based design practice, has completed a new retail location for City of Saints Coffee Roasters at 3 Bryant Park, New York, NY. The coffee bar is Only If's first collaboration with City of Saints, and the fourth retail location for the rising coffee roasting brand based in Bushwick, Brooklyn.

The interior design of the space is based on shades of a sea-foam green colour that builds on and defines City of Saints' brand and identity. The colour is realised through unconventional and industrial materials, including translucent green fiberglass

grating, green quartzite countertop, green suede upholstery, and green epoxy paint. Trend forecaster WGSN has identified this shade of green, a gender-neutral colour with an oxygenating, fresh tone that aligns nature with science and technology, to become increasingly important in fashion and interiors in 2020 and into the next decade.

Coffee is prepared and served from behind a raised central island, which is clad in the translucent green fiberglass grating. The infrastructure such as espresso machines, grinders, nitro brew taps, pour over stations, drinking water taps, pastry display,



Photo: © Michael Vahrenwald / Esto for Only If Architecture, PLLC

and a platform elevator are seamlessly integrated into the rectangular island. The island also choreographs the movement of customers into loop, from point of sale to drink pick-up to a condiment station. This organisation facilitates optimisation and speed, including the workflow of the baristas and customer circulation.

A back room is designed as a seating area with a continuous banquette on its perimeter. Its materials and indirect lighting is intended to produce a calmer, slower space. As coffee bars increasingly take on new functions, loose tables and outlets allow the room to be used as an informal working or meeting space.

The material palette also includes grey rubber floor, grey epoxy walls, mirror, and custom stainless steel handrails and hardware.

C.F. Møller Architects and BRUT jointly win the competition for an ambitious urban development project in Ostend, Belgium

Denmark – The winning proposal by C.F. Møller Architects and BRUT for this new neighbourhood of 500 homes shows how densification on a human scale can improve the quality of life of the residents, the immediate surroundings and the city. The quarter 'De Nieuwe Stad' in Ostend, Belgium, was built in 1972 by two social housing associations. The existing buildings are outdated, and the neighbourhood is struggling with the typical problems of post-war social high-rise neighbourhoods.

It has been decided to replace the buildings and redevelop the entire site. 54 architectural firms wanted to participate in the competition, four were chosen by the clients 'De Oostendse Haard' and 'De Gelukkige Haard' and team C.F. Møller Architects and BRUT has been announced as the winners.

The proposal combines the ambitions of the clients and the city of Ostend with the wishes of current and future tenants within an innovative, inclusive and sustainable housing project. At different scales, new qualities are introduced. On the scale of the city, a new bicycle and walking connection between the city centre and the green belt around the city, following the course of a former creek, ensures that the neighbourhood is taken out of its isolation. On a district scale, The Creek Park, a spacious landscape park increases the quality of life and the opportunities for social interaction and recreation. At neighbourhood scale, the sense of community is enhanced by collecting compact



Photo: © C.F. Møller Architects and BRUT

'houses' around three distinct forecourts that act as a bridge between the existing and new buildings.

A family of 10 'block houses' and 4 'tall houses' adds a new chapter to the residential landscape of Ostend and maximises the advantages of the position between the city centre and the green belt. The compact 'houses' and the neighbouring apartment blocks are gathered around three forecourts, each with its own character. Inspiration for the architecture was found in the qualities of the existing modernist buildings, which, besides the beautiful view, are also appreciated for the large glazed areas and the wide terraces that offer a feeling of light and space. But also the surrounding residential areas and the historic villas at the Belgian coast were a source of inspiration.

Oodi opens in Helsinki, marking a new era of libraries in the world's most literate nation



Photo: © Tuomas Uusheimo



Photo: © Tuomas Uusheimo

Helsinki, Finland – Oodi – a new central library for Helsinki opened on 5 December 2018, a day before Finland marked its 101st anniversary as an independent country. Described as the nation's birthday gift to its citizens, the 17,250 square metres library has been designed by Finnish architecture firm ALA Architects, led by Juho Grönholm, Antti Nousjoki and Samuli Woolston.

Oodi Central Library embodies a new era of libraries in Finland and responds to the country's 2017 update of its public libraries act, which established a mandate for libraries to promote lifelong learning, active citizenship, democracy and freedom of expression. Oodi is located opposite the Finnish Parliament, a site chosen to symbolise the relationship between the government and the populace: with their two houses facing one another across a civic square surrounded by institutions of the arts and culture including the Kiasma Museum

of Contemporary Art, the offices of the Helsingin Sanomat Newspaper and the Musiikkitalo Concert Hall.

The design and programme of Oodi embraces technology to create new opportunities for access to books and culture. Only one third of the space within the library is used to hold books – a relatively modest 100,000 volumes at any time – however thanks to online services and a team of book-sorting robots, users of the library will have access to nearly 3.4 million items at the click of a mouse, making Oodi the principal service point within a much larger, distributed library system. Oodi is supported by the already well-established HelMet online library catalogue and ordering system, which gives access the Helsinki Metropolitan Area's full collection.

The shift in priorities away from storage of a large static collection of books meant that Oodi's librarians and designers were

able to reconsider the role of the library. By entering into an extensive programme of workshops and consultation with library users, they chose instead to explore new and more inclusive ways of creating access. The resulting library is an indoor extension of public space, a civic "living room" that offers facilities such as a movie theatre, recording studios and a maker space, access to public services, exhibitions and community events in addition to books.

Jan Vapaavuori, Mayor of Helsinki said: "Library services are an investment in people. By developing our people we are preparing our society for the coming era, where knowledge, ideas and culture are the commodities that a successful city will trade with the world. The principle that knowledge is for everybody is a long-established component of the success of Finnish society and essential foundation of a city built on trust between government and citizens."

OMA / David Gianotten finalise schematic design for new Feyenoord Stadium at the Maas

Rotterdam, The Netherlands – OMA / David Gianotten have finalised the schematic design for the new Feyenoord Stadium at the Maas. With 63,000 seats the new stadium will be the largest football stadium in the Netherlands. An iconic structure partly located over the river Maas, the stadium design represents the DNA of Feyenoord's current stadium De Kuip, with a perfect

bowl shape formed by continuous curved tiers in close proximity to the pitch. From each seat, visitors will have a sensational view onto the pitch. The stadium is multifunctional and can be programmed with a variety of large-scale events such as concerts and congresses on non-match days. The main concourse around the stadium, designed with Lola Landscape,



Image: Copyright OMA

offers a unique public space with views both into the stadium and over the river and Rotterdam's skyline.

The final schematic design can be realised within the budget for the stadium, taking into account the recent increase in construction costs in the Netherlands, and fully accommodating the needs of Feyenoord's optimised business case. The new Feyenoord stadium is part of a larger urban masterplan for Rotterdam South – Feyenoord City – that has been developed by OMA in collaboration with Football Club Feyenoord, Stadium Feijenoord, the Feyenoord City project team, and the municipality of Rotterdam over approximately the past 2.5 years.

Following the official approval of the schematic design by Feyenoord, OMA will proceed with the detailed design of the stadium. The new stadium is planned to open in 2023. The project is led by David Gianotten with Kees van Casteren and Shinji Takagi.

Foster + Partners to build China Merchants Bank HQ in Shenzhen

London, UK – Illustrating the practice's growing presence in Shenzhen, designs for China Merchants Bank's new global headquarters have been revealed. The first building to be approved in Shenzhen's new prestigious Super Headquarters District, the 350-metre office tower will bring the company's 13,000 strong workforce under one roof. Complemented by a 180-metre-high luxury hotel and office mixed use tower, cultural and retail amenities, and green connections to the waterfront, the design makes a positive contribution to the Shenzhen Bay Area.

Young Wei-Yang Chiu, Partner, Foster + Partners commented: "The tower forms part of a new complex that connects with the next phase of the Shenzhen Bay development, featuring a well-connected urban square linked with the metro, retail, cultural spaces and Shenzhen Bay's amazing waterfront."

The 310,000 square-metre office tower features large-span column-free floorplates that are supported by offset cores on either side. This unique structural solution maximises flexibility in planning the office spaces, while also allowing the building to be lifted up off the ground at ground level to create seamless connections with the outside. The glazed façade has been carefully designed to avoid downdrafts and make the open spaces on the ground floor more comfortable for pedestrians. The green plaza, lined with shops and restaurants, links to the waterfront, while the north side of the building provides a direct link to the metro. The podium level features a gallery area for art alongside sport and fitness facilities for employees.

The top of the building is open to the bank's customers and invited members of the public, and are arranged around a quadruple height atrium, offering a gallery and event space alongside executive meeting and dining areas against the stunning backdrop of the Shenzhen Bay. The location of the split cores towards the east and west helps reduce solar gain and the rainwater harvesting systems will satisfy up to 70 percent of the water demand.



Photo: © Foster + Partners

Amale Andraos / Workac to design Beirut Museum of Art which will open in 2023

Beirut, Lebanon – Following months of review and consideration, the Board of Trustees of BeMA: Beirut Museum of Art is pleased to announce the appointment of Lebanese-born architect Amale Andraos and WORKac, the firm she founded with Dan Wood in 2003, to design its future building. Beirut's newest art museum, BeMA will be centrally located in the heart of Beirut, positioned on a charged and symbolic site in the city that once marked the dividing line in the Lebanese civil war – now to be transformed into a site of unification. The museum's permanent collection will include modern and contemporary artworks from Lebanon, the Lebanese diaspora and the wider region. As Dean of Columbia University's Graduate School of Architecture Planning and Preservation (GSAPP), Amale Andraos is a global leader in the field.

The new 12,000-square-metres museum will feature 2,700-square-metres of dedicated exhibition space and a six-storey promenade that wraps around the façade of the building. WORKac's innovative design for an "open museum" alludes to its geographical heritage by utilising the ubiquitous Mediterranean balcony to transform the museum's walls into hybrid indoor-outdoor spaces where art spills out of the main building and engages with diverse audiences through a gradient of public spaces. Creating a vertical promenade that winds around the cube-like building to the rooftop terrace and café, the design provides BeMA with a new type of flexible exhibition and programing space.

The museum's thickened envelope offers mutable galleries, community rooms and urban gardens suitable for new commissions, artists' projections and installations. By blurring the lines between the interior and the exterior, the porous façade of WORKac's design dissolves the traditionally closed, white cube gallery model and invites the public to engage directly with the work, creating new and varied possibilities for encounters and dialogue with the art as well as amongst its visitors.



Situated on a plot of land owned by Université Saint-Joseph (USJ), the Museum responds to the needs of the community with accessible spaces designed to accommodate educational programmes and public events, landscaped terraces for intimate gatherings, a library, a black box performance space, a café and a rooftop restaurant from which to view the city.

The project represents an alignment of WORKac's decades-long practice, which aims to situate architecture at the intersection of its urban, cultural and environmental context to foster encounters and construct new kinds relationships, with BeMA's core philosophy of working in collaborative partnership with cultural institutions across Lebanon.

This priority for dialogue continues throughout the building, as staggered galleries create open sightlines that juxtapose BeMA's permanent collection of modernist work alongside temporary contemporary exhibitions and public art installed on the façade. The design also features natural ventilation in the expansive open lobby, passive and active solar shading on the façade, a rainwater collection and usage system that directly connects to a green roof for the lower level.

Malcolm Reading Consultants appointed to run MK:U International Design Competition

London, UK – Malcolm Reading Consultants (MRC) has been appointed to run the international design competition for MK:U, a 'new model' university in the heart of Milton Keynes.

The independent architectural competition organiser will launch the competition in early 2019. The announcement of the winning design team and concept design is expected next summer. One of the fastest growing cities in Europe – expected to comprise 500,000 people by 2050 – Milton Keynes (MK) is widely recognised as a test bed for 'smart city thinking' and is at the heart of the Cambridge – Milton Keynes – Oxford growth

arc, a key engine of the United Kingdom's knowledge economy. MK:U is a joint partnership between Cranfield University and Milton Keynes (MK) Council. It is expected to open in 2023, eventually serving 15,000 students. MK:U's focus will be on a vocational and STEM (science, technology, engineering and mathematics) undergraduate curriculum in key areas including digital, cyber, autonomy, robotics and artificial intelligence.

Interested architects and designers can now sign up to receive notification of the launch on the competition website's holding page at competitions.malcolmreading.com/mku.

Patel Taylor adds a dynamic twist to south London's skyline

London, UK – Award winning architect, Patel Taylor, revealed its latest contribution to London's riverscape, Lombard Wharf. Designed for Barratt London, the impressive development sits on one of the last remaining riverfront sites in the London Borough of Wandsworth, south London.

The building, with a distinctive tear-drop shaped plan, appears to twist as it rises, thanks to subtle changes in the positioning of the white precast-concrete balconies. This creates a kinetic appearance, which belies the use of repeating modules, giving the impression that the freestanding structure is carved out of stone. Lombard Wharf is located on York Way, neighbouring smart Battersea Square. The 28-storey building comprises 134 one, two, and three-bedroom homes, alongside a newly planned footbridge and part of the Thames path.

By creating an elegantly unusual form and opening up the surrounding area and public realm through an imaginative



approach to landscape, the development has been praised by Wandsworth Council for its flattering and unique design.

Unlike most riverside developments, Lombard Wharf does not have a discernible front or back. 'Riverfront buildings have a propensity to face the water', said Pankaj Patel, director at Patel Taylor. 'We wanted Lombard Wharf to look equally attractive

from every view point, acting as a marker on the river whilst not turning its back onto the city.'

By giving the building a curved form, Patel Taylor has grounded it in its site, creating a sense of place. This is enhanced by the opening up of two adjacent railway arches, linking two sides of the railway line.

Professor Murray Fraser to receive 2018 RIBA Annie Spink Award

London, UK – The Royal Institute of British Architects (RIBA) announced on 30 November 2018 Professor Murray Fraser as the recipient of the 2018 RIBA Annie Spink Award for excellence in architectural education.

Fraser, who is Professor of Architecture and Global Culture and Vice-Dean for Research at the Bartlett School of Architecture (UCL), was presented with the award at the President's Medals ceremony in London on 4 December 2018. The prestigious biennial prize is awarded to an individual who has made a significant contribution to the advancement of architectural education in a school of architecture anywhere in the world that offers courses validated by the RIBA.

On receiving the award, Professor Murray Fraser, said: "This award means everything to me. Since I began teaching in the 1990s I have worked hard to raise ambitions in design studio and architectural history and theory through a more collaborative and student-centred approach. I have been fortunate to have worked in three excellent architectural schools – Oxford Brookes, Westminster and the Bartlett – alongside brilliant students and colleagues, from whom I have learnt a great deal about being an architect and an educator. This award is as much theirs as it is mine."



Photo: © Dr Eva Branscome

SvN Architects + Planners announces new Partners

Toronto, Canada – SvN Architects + Planners is proud to announce the appointment of Shonda Wang, Sony Rai and Liana Bresler as new Partners of the firm. This new leadership reinforces SvN's long-standing reputation as one of the only design firms in Canada to provide integrated architecture, urban planning and urban design under one roof.

"As leaders in housing and mobility, all of this design intelligence comes into play," said Drew Sinclair, one of SvN's founding partners. "SvN works on difficult city building projects where there are no ready-made design solutions. With this new leadership we are recognising the people who are leading the design of our region's most complicated sites."

Working in almost all major transit corridors of Toronto and the GTA, SvN has a unique understanding of both the private market and public interests. SvN's advice is in high demand due to the firm's unique ability to navigate and stitch together city building investments with market realities. Their portfolio of work



Shonda Wang. Photo: © SvN Architects + Planners



Liana Bresler. Photo: © SvN Architects + Planners

demonstrates the crucial ties between architecture, urban planning and urban design across Toronto and the GTA.

Notable transformative projects include the award-winning Six Points Interchange in Etobicoke, Dundas Connects and Hurontario LRT in Mississauga, Eglinton Connects, Toronto Port Lands Acceleration Initiative, Toronto's Pan Am Athlete's Village, and various multi-unit residential projects in both urban and suburban locations.



Sony Rai. Photo: © SvN Architects + Planners

The exhibition "Progressive Luxury meets Creative Excellence"

Munich, Germany – The exhibition "Progressive Luxury meets Creative Excellence" has opened at BMW Welt Munich. Renowned designer Patricia Urquiola created an exceptional world where Northern Lights were source of inspiration. Special feature is the 320 square metres unique pattern floor she designed with the 3D printing techniques of design-tech company Aectual.

The exhibition is a perfect amalgam of creative design.

Patricia Urquiola created a one-of-a-kind interior setting showcasing the BMW 7 Series, the first-ever BMW X7, as well as the 8 Series line-up, designed by BMW director of design Adrian van Hooydonk.

Urquiola composed an interior using her signature furniture, iridescent steel curtains, and bespoke 3D printed flooring, all inspired by the magnificent Northern Lights.



For the custom-made 320 square metres floor, Urquiola designed a bespoke wavy white pattern, with a dark green and white marble terrazzo infill. The floor is a product of Design-Tech company Aectual, that produces 3D printed pattern flooring out of bio-based plastics. Aectual Floors combine sustainable production with endless design possibilities. Now it is possible to have custom artwork terrazzo in any design on large surfaces, where each square metre is unique.

Coincidentally or not, the exhibition theme "Progressive Luxury meets Creative Excellence" perfectly fits Aectuals vision for the future, where unique building products are 3D printed in a sustainable manner, perfectly customised to any personal taste. Next to 3D printed flooring, Aectuals robotic print technology already offers fully 3D printed interiors, facades and even small homes.

19-21
MAR

Ecobuild Southeast Asia 2019

Malaysia International Trade and
Exhibition Centre
Kuala Lumpur, Malaysia
T: +60 3 2176 8788
F: +60 3 2164 8786
E: ecobuild-sea@ubm.com
W: www.ecobuildsea.com

30 APR-5
MAY

Architect Expo 2019

Challenger Hall 1-3, IMPACT Arena,
Muang Thong Thani, Thailand
T: +66 2 203 4299
F: +66 2 203 4250
E: architect@ncceexhibition.com
W: www.ncceexhibition.com

8-10
MAY

SMABIoT 2019

Taipei World Trade Center Nangang
Exhibition Hall
Taipei City, Taiwan
T: +886 2 8729 1099
F: +886 2 2747 6617
E: info@newera.messefrankfurt.com
W: https://smahome.tw.messefrankfurt.com

27-29
JUN

BMAM Expo Asia 2019

IMPACT Exhibition Center, Hall 6
Bangkok, Thailand
T: +66 2 833 5111
F: +66 2 833 5127-9
E: info@bmamexpoasia.com
W: https://bmamexpoasia.com

3-6
JUL

ARCHIDEX 2019

Kuala Lumpur Convention Centre
Kuala Lumpur, Malaysia
T: +60 16 233 2773
E: info@archidex.com.my
W: www.archidex.com.my

28-30
AUG

Danang Build 2019

Da Nang Fair & Exhibition Centre
Danang, Vietnam
T: +60 3 2692 6888
E: husna@ambtarsus.com
W: www.ambtarsus.com/
calendar-vietnam.htm

18-20
SEPT

Cambuild 2019

Diamond Island Exhibition &
Convention Centre
Phnom Penh, Cambodia
T: +60 3 26926888
F: +60 3 26922788
E: yeo@ambtarsus.com
W: www.cambuildexpo.com

1-3
OCT

ArchXpo 2019

Marina Bay Sands
Singapore
T: +65 6278 8666
F: +65 6278 4077
E: info@cems.com.sg
W: www.archxpo.com.sg

28-30
NOV

MYANBUILD 2019

MEP Mindama, Yangon
Myanmar
T: +60 3 2692 6888
F: +60 3 2692 2788
E: darren@ambtarsus.com
W: www.myanbuild.net

14-16
JAN

Asia Infrastructure 2020

Borneo Convention Centre Kuching
Kuching, Malaysia
T: +60 3 2692 6888
E: rina@ambtarsus.com
W: http://www.ambtarsus.com/
calendar-malaysia.htm

EmiratesGBC's BEA project report presents compelling insights on energy & water use efficiency by Dubai's schools, hotels and malls

Dubai, UAE – While several schools, malls and hotels in Dubai are way ahead in achieving high levels of energy and water use efficiency, others need to pace up their sustainability commitment to ensure they are aligned with the sustainable development vision of the nation.

This was revealed in the results of the Building Efficiency Accelerator (BEA) Project Report, prepared by Emirates Green Building Council (EmiratesGBC), an independent forum aimed at conserving the environment by strengthening and promoting green building practices.

The BEA project is led by the World Resources Institute (WRI) under the UN programme, Sustainable Energy for All (SEforAll), which aims to accelerate implementation of building efficiency policies and programmes, and double the global rate of improvement in energy efficiency by 2030.

Dubai is the first and only city in the Middle East committed to the BEA, and EmiratesGBC is serving as the BEA City Liaison in partnership with Dubai Supreme Council of Energy (DSCE) to evaluate the energy performance of hotels, schools and malls in the city.

EmiratesGBC's BEA team assessed the energy and water performance of existing buildings against similar buildings within the same typology as part of the study since January 2018. A total of 121 properties, including 85 hotels, 27 schools and 9 malls, submitted data on their energy and water use.

The BEA project findings demonstrate performance disparity in all three groups. The study revealed that the best hotel and hotel apartment performers consume 58 percent less energy and 65 percent less water per unit area than the worst performers in the category. Older hotels are likely to consume more energy and water per unit area further highlighting the importance of retrofits. Higher star-rated hotel properties are also likely to consume slightly more energy and water per unit area with hotels and hotel apartments consuming 12 percent less energy and 36 percent less water, on average, per area than resorts.

The best performers among schools consume 61 percent less energy and 84 percent less water per unit area compared to the worst with newer schools likely to be higher consumers of energy and water. The report also indicates that schools rated higher by the Knowledge and Human Development Authority (KHDA) were likely to consume less energy per unit area. Among malls, the lowest consumer uses 35 percent less energy and 58 percent less water per area compared to the highest consumer.

Saeed Al Abbar, Chairman of EmiratesGBC, said: "The project's main objectives is to promote energy efficiency within Dubai's existing building stock by providing performance benchmark data to the industry and public sector. We believe this will provide vital information on the performance of existing buildings to policy makers and building owners and will accelerate the uptake of energy retrofits. The findings reveal that there is a strong potential for savings and operational



Photo: © Emirates Green Building Council

efficiencies that can be achieved through remedial actions such as audits, retrofits, energy management and the use of awareness campaigns or trainings to drive changes in behaviour. The report also highlights the importance of deep retrofits as a substantial measure in advancing towards 100 percent Net Zero Carbon Buildings by 2050 and to achieve the goals of the Paris Agreement of keeping global warming well below 2 degrees Celsius."

The BEA project report provides easy to adapt recommendations for facility managers, operators and building owners to assist them in accurately measuring their buildings' performance. Among the recommendations is the importance of having a sufficient number of sub-meters within malls to track and measure energy and water use.

The report also recommends building on Dubai's existing strategies and policies to encourage benchmarking across all types of buildings. This will help future mandates for building audits and retrofits for poor performing buildings, thereby paving the way for decarbonisation and net zero buildings.

EmiratesGBC will provide the participating hotels, schools and malls with tailored scorecards to highlight the performance of the properties, and to support them in deciding where urgent action is needed to increase efficiency and building performance.

Among the leading entities that participated in the benchmarking project are: Accor Hotels, Middle East & Egypt; Hilton, Middle East & Africa; Taaleem, Inspiring Young Minds; Majid Al Futtaim; Marriott International, Middle East & Africa; Millennium Hotels & Resorts, Middle East & Africa; Movenpick Hotels & Resorts, Middle East & Africa; and Nakheel. Majd Fayyad, Technical Manager, and Jason John, Technical Analyst, at EmiratesGBC led the project and prepared the report.

Saeed Al Abbar, Chairman of EmiratesGBC, said that the report will provide vital information on the performance of existing buildings to policy makers and building owners and will accelerate the uptake of energy retrofits.

The Green Affordable Homes Project

Amman, Jordan – The Green Affordable Homes project 2017–2018 was the first of its kind in Jordan. It was fully aligned to the national plans including to the Jordan Response Plan which aims to develop and strengthen renewable energy and energy efficiency solutions and to increase awareness on energy-saving while building on existing capacities and initiatives.

This project was carried out by Jordan Green Building Council in cooperation with Habitat for Humanity Jordan, funded by the UK's Department for International Development through the Moving Energy Initiative.

The main objective of this project was to provide green affordable homes for poor families. The target achieved by providing more than 250 people from 52 families across Jordan with this type of homes, the summary of the achievement was retrofitting 50 and support in building three new homes.

Through working on the green affordable homes project, many other achievements were accomplished, like raising awareness in green affordable homes across five districts throughout Jordan in one year only. Also, more than 20 local builders (including refugees) trained in green building techniques working in this project helps them to increase their experience, knowledge



Photo: © Jordan Green Building Council

and engagement in green building techniques, working with private sector partners to help bring down the costs of materials and so make them more affordable for all Jordanians.

Many lessons taken from this project, one of them is demonstrating that techniques such as Solar Water Heaters, ventilation and insulation can improve health, comfort and wellbeing has helped raise awareness amongst poorer families and among the wider population of the potential for this type of technology.

Another lesson from the project, was the benefit of utilising traditional skills in a new way. For example, local producers were trained to adapt their handicraft skills to create shading devices (using reused window frames and local straw) to improve the comfort of their homes while others were introduced to upcycling techniques to make best use of available resources to make their homes more energy efficient.

By making this project happen, the Jordanian private sector and local individuals began to come forward and try to contribute and even improve the ongoing work. For example, a company donated paint to support the project and two individuals funded a further two home retrofits once they saw what it was delivering, which resulted in an additional 23 people benefiting from the project. These are just two small examples, but they show what can be achieved, once people realise the benefits.

Jordan Green Building Council is keen to scale up the project to achieve greater positive impact, incorporating all the new ideas, recommendations and lessons learned throughout our experience. So, Jordan Green Building Council is open to opportunities of cooperation and partnership in order to implement this project in a wider range.



Photo: © Jordan Green Building Council

Green Building Council of Sri Lanka holds 7th Annual Green Building Awards

Colombo, Sri Lanka – The 7th Annual Green Building Awards Ceremony was successfully concluded at Earl's Regency Hotel, Kandy on 15 December 2018, awarding the building owners, building material manufacturers and business leaders who have demonstrated their commitment for environmental sustainability during the year 2018 with the internationally recognised GBCSL awards and certificates to. The construction industry professionals who have been trained to perform as Green Consultants were also recognised for their successful completion of the Associate Professional Training Course.

Throughout the 10 years of its remarkably young history, GBCSL has certified nearly 3,000,000 square metres of buildings as "built green" and about 34 building materials and related products under the GREENSL® Labelling System. Over 1000 Associate Professionals have been passed out and have been enlisted as Green Consultants.

The ultimate purpose of the annual award ceremony is to encourage the building owners, building material manufacturers and dealers and the business leaders for their commendable commitment in Building Green.

The 2018 conference was attended by as many as 400 local and international academics and professionals in the development industry. The event was generously sponsored by INSEE Cement of Siam City (Lanka) Ltd, and industry giant committed in prompting Sri Lanka towards sustainability.

Awards received GREENSL® certified buildings

Following buildings were certified under the GREENSL® locally developed systems to assess buildings' of their environmental performance to suit the local conditions. The GREENSL® rating system evaluates the efficiency and performance of the built environment in the aspects such as Management, Sustainability of the building site, Water, Energy, Indoor Environmental Quality, Material management, Innovation in design and social cultural aspect. GBCSL



Photo: © Green Building Council of Sri Lanka

achieved yet another milestone this year, certifying the highest number of buildings so far.

Platinum Category

- Arpico Super Centre, Kegalle
- BOC Eastern Province Office and Super Grade Branch, Trincomalee
- Variosystems (PVT) Ltd., Badalgama
- Clearpoint Residencies, Rajagiriya
- Ranjan Nadeesapillai Associates, Battaramulla

Gold Category

- SLT National Data Center, Homagama
- Batticloa Teaching Hospital, Batticloa

Silver Category

- Kurinchi Homes, Colombo 06
- Southern Petroleum Fuel Station, Papiliyana
- Illukkumbura Industrial Automation (Pvt) Ltd, Ratmalana

Awards received Green labelled products

Green Labelling System (GLS) is an ISO type 1 green labelling system which involves voluntary, third party certification. The GLS encompasses multiple environmentally acceptable criteria across a product life cycle of sustainable materials/products. The certificates were granted to product manufacturers by evaluating the process of establishing environmentally preferable criteria for the product standards.

- St. Anthony's Industries Group (Pvt) Ltd
ANTON ARMOR Roofing

- Samren Holdings Company (Pvt) Ltd
Samren Paving Blocks
- Tokyo Cement Company Lanka PLC
Tokyo Super + Blended Hydraulic Cement
- Macksons Paint Lanka (Pvt) Ltd
Multilac Premium Sheen Emulsion
Mulilac Weather Guard Ultra
- Nippon Paint Lanka (Pvt) Ltd.
Nippolac Emulsion Paint – Interior Use
Nippolac Emulsion Paint – Exterior Use
Nippolac Weatherbond Algaeguard
Nippon 3 in 1 Medifresh
Nippon Easy Wash

License renewal for 2018-2020

- Rocell Bathware Ltd.
Vitreous China Sanitary Ware
Fine Fire Clay Sanitary Ware
- Royal Porcelain (Pvt) Ltd
Glazed Ceramic Tile
Glazed Porcelain Floor Tile
- Royal Ceramics Lanka PLC
Homogeneous porcelain Floor Tile
- Siam City Cement (Lanka) Ltd.
INSEE Sanstha – Portland Limestone Cement
- Lanka Tiles PLC
Glazed Ceramic Floor Tile
Glazed Porcelain Floor Tile
- Lanka Walltiles PLC
Glazed Ceramic Tile

BEAM Plus Certification Ceremony 2018 honours BEAM Plus project teams

Hong Kong – The Hong Kong Green Building Council (HKGBGC) and BEAM Society Limited (BSL) honoured project teams whose BEAM Plus projects achieved Platinum and Gold ratings, as well as Excellent grade, at the BEAM Plus Certification Ceremony 2018 held on 13 December 2018. Officiating at the ceremony, Mr Wong Kam-sing, GBS, JP, Secretary for the Environment, and Mr Liu Chun-san, JP, Under Secretary for Development, presented nearly 50 certifications to BEAM Plus project teams. Other honourable guests included Mr Chan Ka-kui, SBS, JP, Chairman of Construction Industry Council and Mr So Kai-ming, Chairperson of BEAM Society Limited.

Speaking at the ceremony, Mr Wong Kam-sing, GBS, JP, Secretary for the Environment, congratulated project teams. He stressed that buildings and their related activities contributed to 90 percent of electricity use and 60 percent of carbon emission in Hong Kong. Their performances in energy conservation and emission reduction are crucial to the environment.

Mr Liu Chun-san, JP, Under Secretary for Development, admired the efforts made by BEAM Plus project teams to overcome various challenges. He also denoted that the government had set an example in striving for green elements in government buildings. Among the government projects that had registered BEAM Plus, most of them had achieved Platinum or Gold rating, to ensure the ideal sustainability performance.

Mr So Kai-ming, Chairperson of BSL, mentioned that the BEAM Plus New Buildings assessment tool was under revision. It was estimated that the upgraded Version 2.0 of BEAM Plus New Buildings would officially launch in 2019. Striving to improve the assessment tool, BSL had been continuously engaging industry stakeholders. Mr So believed that the revised credits and aspects in



Mr Wong Kam-sing, Secretary for the Environment, Mr Liu Chun-san, Under Secretary for Development, and Mr Chan Ka-kui, Chairman of Construction Industry Council attended the BEAM Plus Certification Ceremony 2018 and took group photos with Directors of the Hong Kong Green Building Council. Photo: © Hong Kong Green Building Council (HKGBGC) and BEAM Society Limited (BSL)

BEAM Plus met the demand of the green building market. "Shorten the administrative process provides more flexibility for developers," he said.

Ir Colin Chung, Chairman of Green Labelling Committee of the HKGBGC was delighted that owners and developers demonstrated their commitment in turning their premises green, by achieving Platinum rating and Excellent grade in BEAM Plus Existing Buildings V2.0. He also congratulated the first BEAM Plus Neighbourhood V1.0 certified project. Ir Chung expected the industry would utilise the BEAM Plus Neighbourhood assessment tool to design and plan better quality public space.

Nearly 50 certifications were presented to project teams whose projects achieved outstanding ratings – Platinum, Excellent and Gold. There was the first project certified as Platinum rating under BEAM Plus Neighbourhood V1.0. The sustainability performance at the masterplanning stage of the development were being assessed. The project success will bring more green spaces and build a healthier living environment to the community.

Assessed by BSL and certified by the HKGBGC, BEAM Plus assessment is the Hong Kong' leading initiative to offer independent assessments of building sustainability performance relating to the planning, design, construction, operation and management. BEAM Plus consists of four assessment tools, namely New Buildings, Existing Buildings, Interiors and Neighbourhood. Currently there are over 1,000 registered BEAM Plus projects with diverse types, for example, residential, commercial, government buildings, infrastructure, institutional projects, etc., marking a milestone for green building movement in Hong Kong.

SUPER LUXURY HOTELS IN DUBAI

Mapei was involved in the waterproofing and installation of ceramics and marbles in three new 5-star hotels in Dubai, UAE.

Three excellent hotels with unparalleled amenities grace Al Habtoor City in Dubai. World-famous international designers and architects have worked on the three 5-star hotels in the new neighbourhood, representing famous hospitality brands that inspire confidence and symbolise luxury living and offering more than 1,600 elegant rooms. All three hotels are designed and inspired by different époques and styles. The St. Regis Dubai is inspired by the legacy of New York's gilded age and represents nobility and Beaux-Arts architecture. W Hotel is characterised by an avant-garde design. On the other hand, The Westin Dubai interiors feature stylised motifs inspired by Art Décor, which combines modernist style with fine craftsmanship and rich materials.

Owners and designers choose Mapei waterproofing systems for underground structures, bathrooms and damp areas due to the company's reputation as supplier of quality products. Mapei solutions were also used for building screeds and installing ceramic tiles and marble slabs in several areas of the hotels.

Besides, all the materials and systems supplied in the project feature low emission level of VOC (Volatile Organic Compounds) and comply with the LEED requirements, which enable designers and contractors to create eco-sustainable projects.

Waterproofing underground structures

For waterproofing 70,000 square metres of substructure, the contractors used the synthetic membrane MAPEPLAN TU WL 30 with good mechanical and welding characteristics. The innovative concept of inserting a "warning layer" allows easy detection of any eventual damage that may occur during the installation or subsequent working phases, safeguarding the integrity of the whole waterproofing system.

For waterproofing structural joints, IDROSTOP PVC BI/BE was used, a highly flexible water stop made out of high-quality thermo-plastic vinyl resins. The anchorage of the membrane was completed with MAPEPLAN T DISK, a PVC-P fixing element with high puncturing resistance. Sealing and waterproofing injections in construction joints were carried out with IDROSTOP MULTI PVC-P re-injectable hoses.

More than 1,000 piles were treated using MAPEGROUT ME05, a high performance, shrinkage-compensated, high-flow micro concrete along with PLANIGROUT 300 ME PCT, a three component, multi-purpose fluid epoxy resin grout. Both products are manufactured and distributed on the UAE market by Mapei Construction Chemicals L.L.C., the UAE subsidiary of the Group. Onsite technical support was provided

by Mapei during the system installation, which was important to ensure the quality of welding.

Waterproofing bathrooms and damp environments

MAPELASTIC SMART, a two-component, highly flexible cementitious mortar, was chosen for waterproofing substrates on all types of damp environments due to its durability, high performance and easiness of application characteristics. It was applied on over 90,000 square metres in the three hotels. MAPELASTIC SMART is easily applied by brush, roller or spray, on both horizontal and vertical surfaces, at a thickness of approximately 2 mm. Due to the content and high quality of the synthetic polymers used in the formulation, the hardened layer of MAPELASTIC SMART remains constantly flexible under all environmental conditions.

In order to ensure the excellent mechanical characteristics of MAPELASTIC SMART membrane, it was reinforced with MAPETEX SEL, a non-woven, macroholed polypropylene fabric.

Building screeds and consolidating the substrates

A Mapei system was used for substrate preparation on both horizontal and vertical surfaces, before installing ceramic tiles and natural stone. The company proposed TOPCEM, a special quick-drying (four days), controlled-shrinkage hydraulic binder, to create screeds on an area of 50,000 square metres. TOPCEM allows ceramic tiles to be installed after 24 hours and natural stone after two days. These properties added a great value for the projects by speeding up the process of tile installation in comparison with traditional sand-cement screeds.

Gypsum boards were treated with





Ceramic tiles were installed with KERAFLEX MAXI S1, KERAFLEX and ADESILEX P9.



Substrates in the bathrooms were waterproofed with MAPELASTIC SMART and MAPELASTIC SEL.



ADESILEX P9 was used to bond porcelain tiles on both horizontal and vertical surfaces.

PRIMER G, a synthetic resin primer in water dispersion with a very low content of VOC, prior to the installation of ceramic tiles.

Installing ceramic tiles and natural stone

Thanks to its complete range of adhesives and grouts, Mapei was chosen by the investor as supplier of systems for installing ceramic and marble coverings. Before selecting the most suitable adhesives, dimensional stability and staining tests were conducted in Mapei Research & Development Laboratory. Based on laboratory results, it was decided to use the high performance adhesives KERAFLEX MAXI S1, KERAFLEX, and ADESILEX P9.

KERAFLEX MAXI S1 is a deformable cementitious adhesive with extended open time and no vertical slip, especially suitable for the installation of large-size porcelain tiles and natural stone.

KERAFLEX, also a cementitious adhesive, is suitable for single-fired, double-fired, and porcelain tiles, terracotta, klinker, stone materials and mosaics on every type of floors, walls and ceilings.

ADESILEX P9 cementitious adhesive with no vertical slip was selected for bonding porcelain tiles on vertical and horizontal surfaces.

As for grouting joints on both ceramic and marble coverings, Mapei proposed KERACOLOR FF and ULTRACOLOR PLUS,

high-performance, anti-efflorescence, quick-setting and drying polymer-modified mortars with water-repellent DropEffect and mould-resistant BioBlock technology. Their wide range of colours enables designers to choose appropriate tones for proper combination with ceramic tiles.

Article source: Realtà Mapei Middle East & East Africa, no. 01, the in-house magazine published by Mapei Construction Chemicals L.L.C.

For more information, email mapei@mapei.com.sg.

Mapei Products

Underground waterproofing: Idrostop Multi, Mapeplan T Disk**, Mapeplan TU WL**, Mapegrout ME 05*, Planigrout 300 ME PCT*, Idrostop PVC BI/BE

Waterproofing damp areas: Mapelastic Smart, Mapetex Sel

Building screeds and preparing substrates: Topcem, Planicrete, Primer G

Ceramic and marble installation: Keraflex Maxi S1, Keraflex, Adesilex P9

Grouting joints: Keracolor FF, Ultracolor Plus

*These products are manufactured and distributed in the UAE by Mapei Construction Chemicals.

**These products are manufactured by Polyglass SpA, Mapei Group.

PROJECT DATA

Project Name: St. Regis, The Westin Dubai and W Hotel

Location: Al Habtoor City, Dubai, UAE

Period of Construction: 2013- 2016

Period of the Mapei Intervention: 2013-2016

Intervention by Mapei: Supplying products for screeds, waterproofing and bonding ceramic tiles and marble

Client: Al Habtoor Group LLC

Design Consultant: Khatib & Alami Consolidated Engineering Company

Main Contractor: HLG Contracting

Sub-Contractors: Al Shirawi (waterproofing), GCS (screeds)

Installation Companies: AHK International, Marmi Group, Dar Al Rokham

Mapei Coordinators: Bachir A Abdallah, Shatha Weldali, Hany Al Assal, and Ian Gregory, Mapei Construction Chemicals L.L.C. (UAE)

Photos: © Mapei

BANYAN TREE ANJI

Banyan Tree Anji is thoughtfully designed to connect a dialogue between man and nature.

Anji is an exquisite and serene city in south of the Yangtze River, and named after The Book of Songs, which means comfortable and wonderful. Banyan Tree Anji is located in Lingfeng National Tourist Resort, and surrounded by mountains at four sides, water at one side. After entering the national highway, various lakes and reservoirs scatter, peach trees are planted near lakes, tea gardens are layered, secluded yards with white walls and black tiles scatter, fertile soils, beautiful ponds and mulberry and bamboo forests are everywhere, this is exactly a peach colony for people who live in seclusion.

Greentown and Banyan Tree jointly entrust ZSD to integrally plan the interior design of Banyan Tree Anji, so as to create a more unique Banyan Tree.

Based on experience in design and construction and abundant knowledge about hotel operation, ZSD has planned and arranged the hotel space, independently completed designing guest rooms in the main building, and cooperated with CL3 to on designing the main public space of hotel, meanwhile, it also coordinates and leads all teams which participate in hotel design.

Architects have created a set of Chinese courtyards among mountain ridges by conforming to terrain, sought for the balance between neatness and nature, combined rectified axes with free village layout, instead of sticking to exquisite artistry adopted by buildings

in Suzhou and Hangzhou, a natural and unrestrained ancient conception is more pursued.

By inheriting local style, interior design is aimed at connecting dialogue and perception between man and nature through a thorough spatial shaping and depiction. At the preliminary stage, through comprehending historical scenery in Anji, architects have defined the space as a residence for substantial literary family, expected to deliver the traditional temperament of Banyan Tree by adopting a popular technique in modern times, hence formed an artistic conception of tranquil luxury and contemporary elegance.

It's noteworthy that the hotel consists of 11 quadrangles of different sizes and each area is comparatively independent, so how to make these spaces unified, continuous and also distinctive? Through spatial arrangement and texture planning, ZSD adopts modern depiction of traditional details like potted landscape, landscape paintings and lanterns to pervade the whole hotel space, guests walk through, stay and experience an abundance of different feelings, then return to a unified and tranquil mental experience, at last, they get relaxed and satisfied with this journey, and expect to return.

The Lobby

The lobby is a square quadrangle. Initially, a landscape axis spreads out

from the main entrance, water courtyard to mirror platform, and further links reflection pool on the outdoor platform, eventually, guests will be attracted by continuously rising and falling mountain ridges and reservoirs in the distance, and instantly feel tranquil and open. Water courtyard, reception lobby, lounge and book bar are orderly distributed around centre courtyard, column-free and spatially raised, unlike the traditional Chinese wooden beam system that separated space, interior design intends to integrally connect these three spaces in series, create extended and broad modern spatial perception with warmly and elegantly warm texture and colour, besides, Chinese potted landscape, abstract art and lanterns with metal details are used for embellishing, guests wander between classics and modernity without sensing any conflicts.

Chinese restaurant

Chinese restaurant area is a set of scattered yards, including dining hall, wine bar, seven private dining rooms and two VIP dining rooms. The dining hall is a 6-metre-high mansion, after passing the front courtyard and gallery, a huge and square skylight comes into sight, the interior space is planned to be vibrant and orderly, which is separated into half-private spaces for dining by several wooden screens, in addition, lighted by lantern-like ceiling lamps, guests feel like immersing in flourishing woods and tall bamboo bushes.

Guest rooms in main building

If the public space is viewed as the luxurious hall of a mansion, then guest room must be the serene and private place for residence. Guest rooms mainly centralize in a modern curtain-wall building, in order to make it convenient for viewing, all guest rooms are equipped



Photo: © b+m Studio



Photo: © b+m Studio



Photo: © b+m Studio



Photo: © b+m Studio

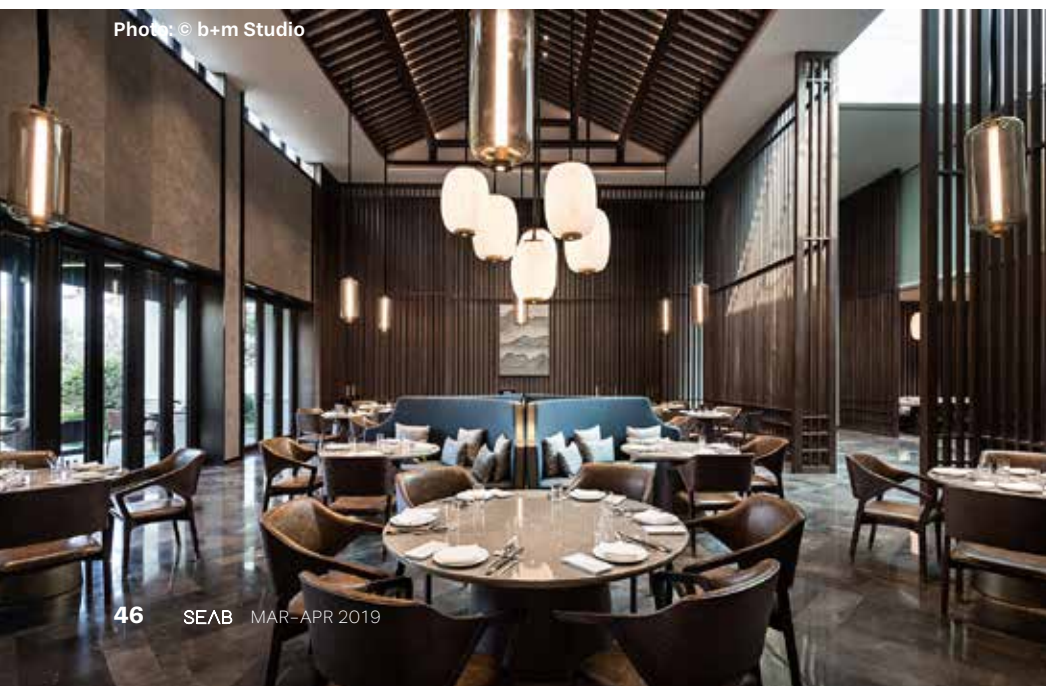


Photo: © b+m Studio

“Located inside a mountainous bamboo forest and with a view to a lake, the Banyan Tree Anji blends traditional Chinese architecture with contemporary hotel amenities.”

– William Lim, Founder and Managing Director of CL3 Architects Limited



Photo: © ENVANER

PROJECT DATA

Project Name: Banyan Tree Anji
Location: Anji County, Huzhou City, Zhejiang Province, China
Operator: Banyan Tree Group
Architectural Design: gad
Joint Interior Design: ZSD, CL3 Architects Limited, Design Department of Banyan Tree Group
Floor Area: 3,160 square metres
Completion: March 2018

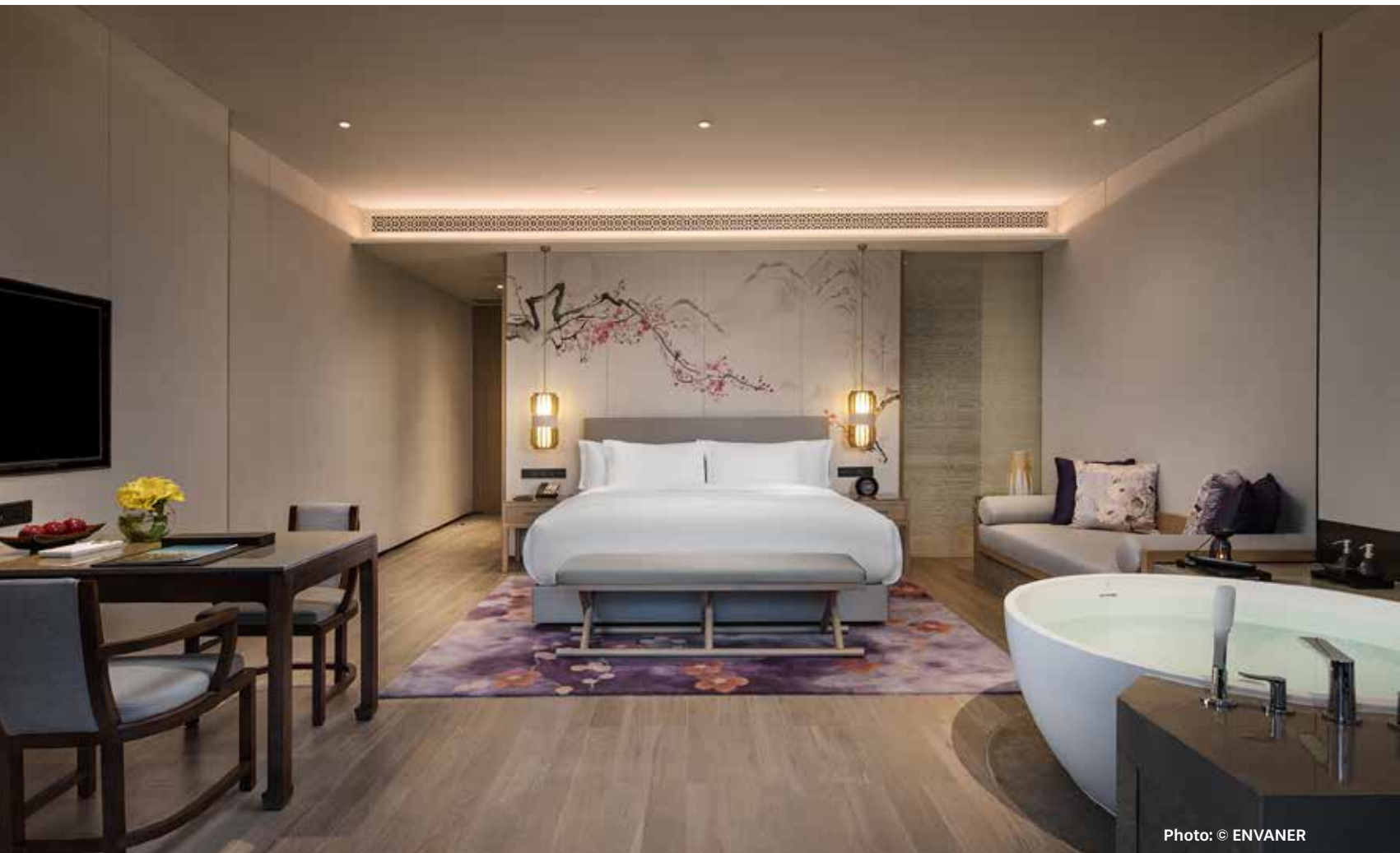


Photo: © ENVANER

INTERCONTINENTAL SHANGHAI WONDERLAND

**Once an abandoned quarry,
InterContinental Hotels Group (IHG)
and Shimao Group have turned it into a
wonderful hotel beneath the ground.**

Developed by Shimao Group and managed by IHG, InterContinental Shanghai Wonderland is a luxury hotel masterfully built into the side wall of a formerly abandoned quarry in Southwestern Shanghai. Stretching 88 metres underground, the hotel was nominated as one of the architectural wonders of the world by the National Geographic Channel's MegaStructures series due to its pioneering architectural design.

Founded in 1946 by aviation pioneer, Juan Trippe, InterContinental Hotels & Resorts have been on the forefront of luxury hospitality industry for decades with an extensive and growing network of unique hotels and resorts in stunning locations around the world. The new-build InterContinental Shanghai Wonderland combines the brand's signature luxury with revolutionary design at a wonderfully unique location, creating an unprecedented experience that will forever change the global hospitality landscape.

Continuing the brand's dedication to providing high standards of guest service and delivering captivating destination experiences, InterContinental Shanghai Wonderland offers services and facilities

signature to the InterContinental brand. The award-winning InterContinental Concierge adopts the brand's "In-the-Know" approach and features a series of curated experiences to help guests discover the beauty and charm of the destination. Located right above water level in the hotel's rock quarry architecture, the Club InterContinental lounge offers a range of exclusive services and benefits for its guests.

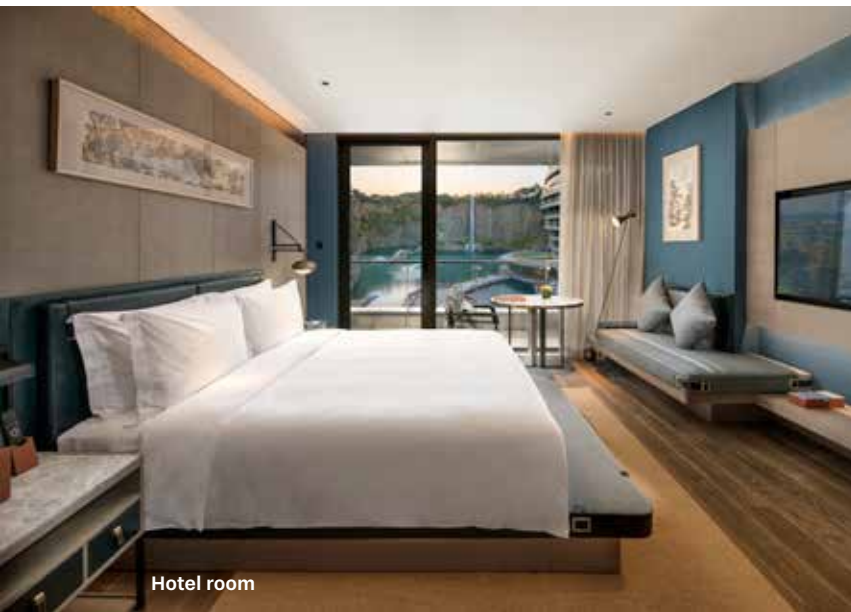
Located beside Tianma Pit at Sheshan Mountain Range, this legendary new hotel is mostly subterranean, with two floors above ground and 16 below ground, including two floors underwater. Individually designed to best reflect both modern elegance and the unique features of quarry landscape, all 336 rooms and suites provide ample, luxury living spaces with spectacular views of waterfalls and the surrounding cliffs. The stunning underwater loft offers two awe-inspiring levels: the landing deck at water level houses the outdoor terrace and bedroom, whilst the underwater living room are encased within a turquoise aquarium where guests will be surrounded by schools of fish swim by. Furthermore, all hotel rooms on the bottom floor are provided with around-the-clock butler service to ensure a truly hassle-free stay experience and keep guests feeling truly pampered.



The Quarry, a bar in the hotel.



Hotel overview – daytime.



Hotel room



Clouds Scud Across Sculpture at the entrance of the hotel.



“It’s the first time to turn an abandoned quarry into a wonderful hotel beneath the ground. This is such a unique opportunity that gives me some really interesting ideas of reshaping the relationship between city and nature.”

– Martin Jochman, Principal Director and Senior Design Director of JADE + QA Architects

PROJECT DATA

Project Name: InterContinental Shanghai Wonderland
Location: Tianma Pit at Sheshan Mountain Range, China
Client: Shimao Group
Architect Firm: JADE + QA Architects
Floor Area: 61,087 square metres
Completion: November 2018

JUMEIRAH NANJING

LTW Designworks, an award-winning Singapore-based interior design studio, has unveiled the interior design of Jumeirah Nanjing, the studio's latest project in China.

Bringing a world-class portfolio of experience in bespoke hospitality design, LTW was commissioned to craft the interiors for the hotel's public areas, guestrooms and suites, restaurants, lounges, banqueting and wellness facilities for this latest entrant to Asia's luxury hotel market.

Strategically situated along the picturesque Yangtze River in the Hexi New Business District, the hotel enjoys panoramic views of the water against the bustling cityscape.

Inspired by a folktale about "the black dragon" seen by the Emperor through the misty air of Xuanwu Lake, the hotel's main lobby features two key elements from this legendary tale: the peaceful, reflective quality of the lake and the contrasting dark intensity of the mythical creature. Juxtaposing light and dark, smooth and textured, the aura of the powerful mythical creature is translated in the soaring dragon-scale feature wall, set within an eight-storey high curved glass skylight. The grand lobby depicts scenes of a flowing river, with its central seating area composed of weaving islands on top of ripple-patterned marble flooring. Two imposing sculptures stand within the lobby space to draw the eye upwards, allowing guests

to take in the dramatic height while giving scale and proportion to the lobby floor

Drawing influence from a Tang Dynasty poem that describes "spring rain and autumn mist hovering over Chinese palaces", Cha Jie Tea Lounge and Chocolatini Martini Lounge on the 41st floor narrate a play between these seasons. Cha Jie's spring-inspired design employs soft, neutral shades of white and beige to create a sunlit, open space framed by black lacquered panels inset with falling ginkgo leaves. Sitting across is Chocolatini, an elegant chocolate-pairing cocktail and martini bar designed with a warm Autumn-hued interior with a tangerine arched ceiling, brick red plush leather armchairs, and lacquered panels with red and yellow maple leaf motifs.

Zhuo Xian, a fusion seafood restaurant and bar, exudes a relaxed sophistication with its chestnut brown banquettes, taupe leather chairs and sleek open bar, surrounded by sequential timber tiles, embossed ceiling panels and perforated metal screens resembling fishing nets as described in a famous Tang Dynasty fisherman's tale.

Lu Chao, the contemporary Chinese restaurant located a floor below, depicts

the majestic glamour of an ancient Chinese palace, inspired by a poem about Jinling – the land of emperors and kings. With interiors based on imperial gold, this luxurious colour is highlighted in a subtle manner with rich mustard and white abstract carpeting, stained parquet flooring and plush tan leather and ivory upholstered seating. Warmly uplit ceiling coffers add cosiness to the space while delicate gold string artwork hang on textured clad columns to give reference to willow trees.

Tracing back to Nanjing's history as an education and literary haven for scholars, the guestroom design is a comforting retreat for sophisticated travelers. The "Four Treasures of Study" – brush, ink, paper and inkstone – were used as key inspirations within the rooms and suites. Oversized compositions of traditional wooden printing blocks were adapted into decorative screens; their asymmetrical brush-stroke patterns alluding to the flowing dragon motif. Sculptural lighting fixtures in the suites give consistency to the public area design, set amidst a predominantly neutral colour palette of warm timber flooring with abstract brown and white inset carpet, beige lacquered panels and grey upholstered furniture with black accents.

Inspired by a Ming Dynasty prose about a morning blossom by the water, the Talise Spa is minimally designed with subtle floral patterns, inviting guests to a peaceful retreat within its treatment rooms. The Sky Pool sits atop the building under a glazed skylight with its rectangular infinity pool oriented towards the vast city beyond. Specially designed gym studios created by LTW are housed in three individual glass boxes overlooking the pool deck, giving the four-storey space an appropriate human scale.





Mr Lim
Hong Lian.
Photographer:
© Rhys Ngo,
Pentaprism

“Nanjing was the capital of China for six dynasties and boasts a long history serving as a cultural and literary centre, dating back to the third century. We were inspired by the poetic narratives from this unique history, and have employed these as the base of the design concept, evoking a strong sense of place by reinterpreting Chinese literature with a modern twist.”

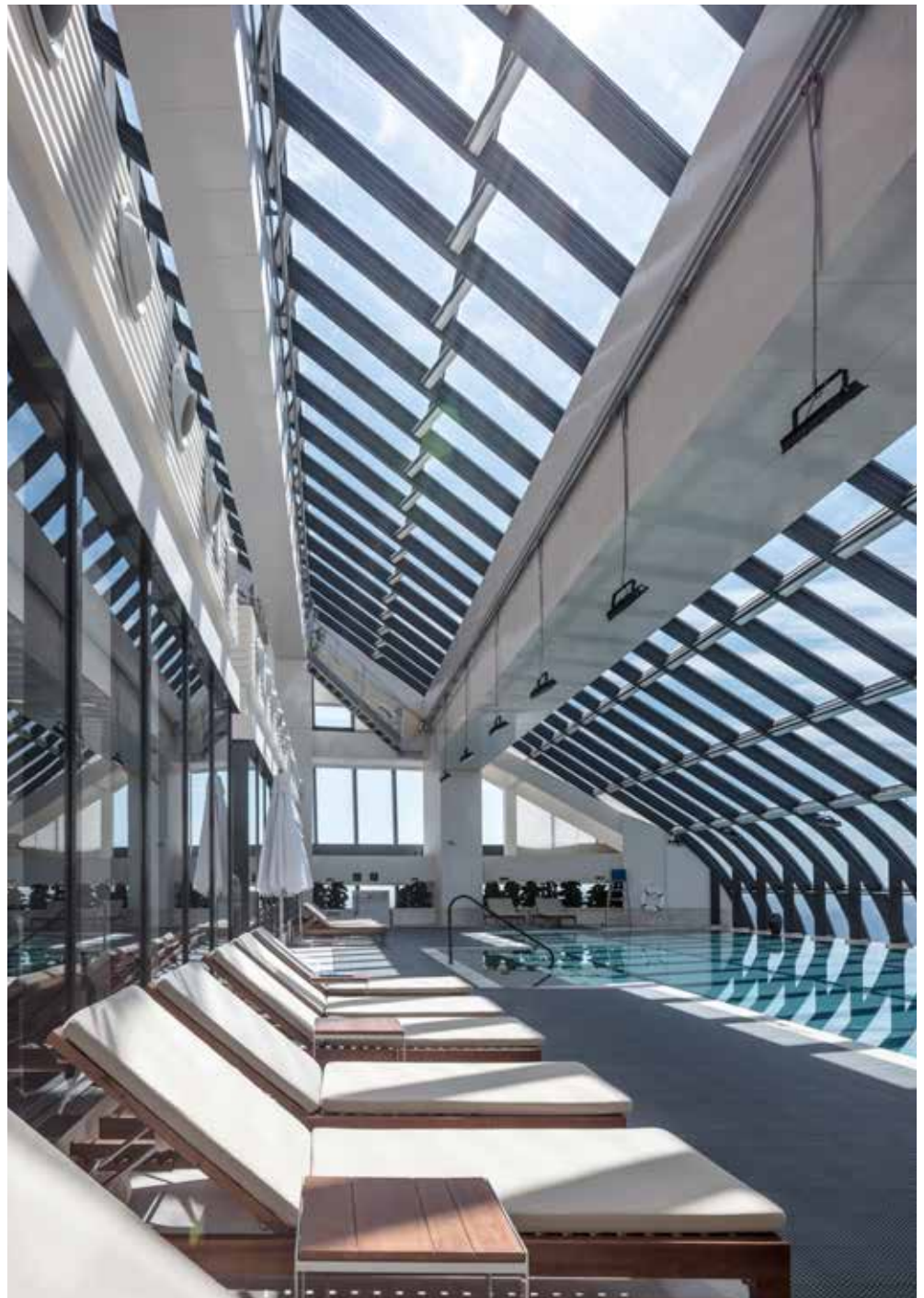
– Mr Lim Hong Lian, Founder and Principal Partner of
LTW Designworks





PROJECT DATA

Project Name: Jumeirah Nanjing
Location: Nanjing, China
Client: Nanjing Youth Olympic City Construction and Development Co. Ltd.
Interior Design Firm: LTW Designworks
Floor Area: 40,000 square metres
Grand Opening: 9 September 2018
Photos: © Jumeirah Nanjing



HOTEL SUGGATI

Hotel Suggati is a stunning waterfront property in Mawlamyaing in Myanmar.

Designed by US architect Daniel West, the 72-key Hotel Suggati celebrated its grand opening on 10 January 2019 in Mawlamyaing, the capital of Myanmar's Mon State. Commanding a panoramic vista over the Thanlwin (Salween) River, the waterfront property brings a new vitality in business hotel options to the country's fourth largest city.

The five-storey Suggati is owned by the Memories Group, and provides conference rooms, working spaces with hi-speed Wi-Fi, a fitness centre, and a restaurant specialising in both Burmese and Western cuisines, as well as French pastries, which will be open to the local public.

PROJECT DATA

Project Name: Hotel Suggati
Location: Mawlamyaing, Mon State, Myanmar
Client: Memories Group
Architect Firm: SPA Design & Project Services Ltd
Total Floor Area: 5,500 square metres
Completion: 2018
Renderings & 3D Photos: © Memories Group

“The inspiration behind the Suggati Hotel in Mawlamyaing stems from the country’s historic river front architecture of the previous century. We wanted to deliver a hotel that addressed its context and helped to revive the water front experience through a classic architecture, which stands in contrast to the nearby contemporary structures. This contextualism we believe achieves both the desire to stand out and deliver a building which is approachable due to a deep-rooted history.”

– Daniel West, Managing Director, SPA Design & Project Services Ltd.





MGALLERY HOTEL DE LA COUPOLE

Designed by renowned luxury resort designer Bill Bensley with sweeping views of Sapa Valley and serene rice paddy fields, the newly opened MGallery Hotel de la Coupole integrates the vibrant colours, patterns and textures of the region's minority tribes with the sophistication of haute couture in the 1920s and 1930s French Indochina era.

Featuring 249 modern rooms and suites with six room types that overlook the legendary Sapa valley and mountain views, the names and design of each room category represents a French style icon inspired by the local minority tribes surrounding Sapa.

MGallery is a collection of storied boutique hotels offering guests unique experiences inspired by the destination. Each MGallery hotel stands as a gateway into another world – be it a bygone era, a hidden haven or a spectacular natural landscape. The collection is comprised of historic luxury hotels, many of which have hosted historic figures or iconic poets and authors. Others are stunningly modern design hotels inspired by the cities they are located in but in every case, MGallery hotels are each inspired by their own stories echoed by their artful design. Food and beverage is the heart and soul of MGallery Hotel de la Coupole. The resort boasts one

restaurant, a bar and a patisserie. Chic, a French restaurant with Haute Couture inspiration where customers can dine in a grand yet intimate setting, with refined French dishes infused with local ingredients and a carefully-curated wine list, comprising specially procured French labels. Featuring a cozy fireplace with views of the mountains, Absinthe

offers a selection of tapas, wines and locally inspired cocktails while Cacao features a variety of freshly baked breads, handmade macaroons and specialty coffees, teas and Marou hot chocolate.

Leisure facilities include a heated pool named Le Grand Bassin, fitness centre, Nuages spa and Bobbins kids club where the young ones are kept entertained with a range of kids programme. As the only international luxury hotel in Sapa, the resort offers a 435 square metres ballroom that can host up to 570 guests in theatre style, six meeting rooms for small meetings and conferences.

PROJECT DATA

Project Name: Hotel de la Coupole, MGallery by Sofitel
Location: Sapa, Lao Cai, Vietnam
Client: Sun Group
Management Company: AccorHotels
Architect Firm: Bensley
Floor Area (for 10 floors): 39,561 square metres
Completion: 2018
Photos: © Hotel de la Coupole, MGallery by Sofitel







"The story for Hotel de la Coupole is very much based in reality. Sapa was once a sleepy market town tucked between high peaks and verdant rice terraces, but in 1914 it became the summer capital for French colonists, seeking to escape the summer heat of the Red River Delta. This hotel tells the story of the second hotel built in Sapa, the Hotel de la Coupole, which was created by ten French architects. They created an enchanting masterpiece in the clouds, embellished with 50 shades of mustard! The DNA of the hotel comes from French Haute Couture and Sapa's Hill Tribe fashion."

—Bill Bensley, Founder of Bensley



HYATT REGENCY BANGKOK SUKHUMVIT

The opening of the new Hyatt Regency Bangkok Sukhumvit marks the Hyatt Regency's debut in Bangkok.

Hyatt recently opened Hyatt Regency Bangkok Sukhumvit in Bangkok, Thailand. This marks the Hyatt Regency brand's entry into the capital of Thailand. Located on the bustling Sukhumvit Road, the hotel is connected to the Nana station of the Bangkok Mass Transit System (BTS) via a sky bridge and offers guests convenient access to nearby shopping malls, office buildings and tourist attractions.

The hotel is located near the Nana neighbourhood – meaning "meeting place" – which has traditionally been a multicultural marketplace where people from around the world connect and exchange ideas. Today it offers travelers an immersive experience of Bangkok's vibrant street markets. The hotel is also easily accessible, as it is only 15.5 miles (25 kilometres) from Bangkok Don Mueang International Airport and 20.5 miles (33 kilometres) from the Bangkok Suvarnabhumi International Airport.

Design and guestrooms

Hyatt Regency Bangkok Sukhumvit is part of a 31-storey, mixed-use development, which includes a luxurious condominium and upscale retail shop, designed by award-winning Bangkok-based architecture firm, OBA. The hotel is conceived as a modern Thai house by local interior design company, PIA and pays tribute to the golden periods of Thai history through contemporary aesthetics,

furniture and rugs. Featuring elegant sculptures by renowned Thai national artist, Ajarn Nontiwat Jantanapalin, and lush landscaped gardens, the hotel offers a refreshing respite from the city's busy pace.

Hyatt Regency Bangkok Sukhumvit features 273 guestrooms, including 21 suites, all with floor-to-ceiling windows to take in the city views. Starting from 377 square feet (35 square metres) for a standard room, all guestrooms are equipped with the Hyatt Mobile Entry technology, enabling guests to

use their smartphone in lieu of a room key card. Each room also comes with a Handy smartphone for travelers to stay connected and enjoy seamless exploration of the city.

The 2,249-square-foot (209-square-metre) 28th floor Presidential Suite features a dining room, a private workout room and a spacious outdoor terrace with panoramic views of Bangkok. Guests staying on the 27th floor can access the Regency Club Lounge. Privileges include exclusive check-in and check-out services as well as food and drinks alongside stunning city views with the choice of indoor or outdoor seating.

Drinking and dining

Hyatt Regency Bangkok Sukhumvit features three distinct dining outlets including a lobby lounge bar to suit different occasions. Market Café serves authentic Thai cuisine in a casual atmosphere inspired by local markets.



Hyatt Regency Bangkok Sukhumvit - Outdoor swimming pool at night.





Hyatt Regency Bangkok Sukhumvit - Market Café open kitchen.



Hyatt Regency Bangkok Sukhumvit - Market Café seating area.

The 24-hour eatery offers diners private rooms and outdoor terraces for special celebrations. Spectrum Lounge & Bar, which is the first project in Thailand by the acclaimed Tokyo-based Super Potato, offers premium snacks, craft cocktails and live music throughout the top three floors of the hotel. The restaurant also extends to the rooftop where guests can enjoy mesmerizing bird's eye view of Bangkok from the outdoor terrace.

Meetings and events

Hyatt Regency Bangkok Sukhumvit offers 14,628 square feet (1,359 square metres) of meeting and event space to host business conferences and social gatherings. The Regency Ballroom can accommodate up to 850 guests, while the four meeting suites provide flexible arrangements – from a boardroom for 24 people to a reception for 140 guests. All venues feature natural sunlight and come with the latest audiovisual facilities such as smart LED televisions, high-definition video conferencing suites and wireless Internet.

Wellbeing and recreation

A wide range of recreational facilities are located on the sixth floor, including an outdoor freeform swimming pool surrounded by lush vegetation, an outdoor whirlpool, a pool bar, lockers and a steam room. The 24-hour gym overlooks the city and is equipped with a cardio zone, strength zone, and free weights.



Hyatt Regency Bangkok Sukhumvit - Deluxe Room.



“With this hotel the beauty of the design is in the small details. The brief was to develop something that was rooted in Thai tradition and more understated rather than over the top. We also wanted to create a Hyatt “home” not just a hotel.”

– Mr Niwat Aunprueang, Senior Executive Partner of PIA

PROJECT DATA

Project Name: Hyatt Regency Bangkok Sukhumvit
Location: Bangkok, Thailand
Client: Hyatt
Architect Firm: OBA
Interior Design Firm: PIA Interior Co., Ltd.
Floor Area: 20,000 square metres
Grand Opening: Early 2019
Photos: © PIA Interior Co., Ltd. and Hyatt Regency Bangkok Sukhumvit

NOVOTEL SHANGHAI HONGQIAO HOTEL

Winner of two prestigious awards, the Novotel Shanghai Hongqiao Hotel has a design concept of a floating courtyard.

Novotel Shanghai Hongqiao Hotel is a 367-key hotel with a ballroom, restaurants and leisure facilities. As the site is adjacent to the airport and traffic node, the client and planning authority envisioned it to be a landmark building at the entrance to the Linkong Park.

The design concept of the hotel is derived from a 'floating courtyard' and

utilises the verticality of the structure to create a well-defined zoning which consists of public (retail podium), semi-public (leisure and hotel amenities) and private (hotel guestrooms) zones. The middle zone defined by a large opening in the facade depicts a floating courtyard and it contains water features, dining and leisure amenities.

The project utilised Computation Fluid

Dynamics technology extensively to assist in the design of the open courtyard and its micro-environment. A special vierendeel structure was incorporated into the building to provide an unobtrusive solution to expose two major sides of the. This innovative structural element enhances natural ventilation and lighting in the courtyard and creates one of the most inviting public spaces in the city.



PROJECT DATA

Project Name: Novotel Shanghai Hongqiao Hotel

Location: Shanghai, China

Client: Novotel

Architect Firm: Aedas

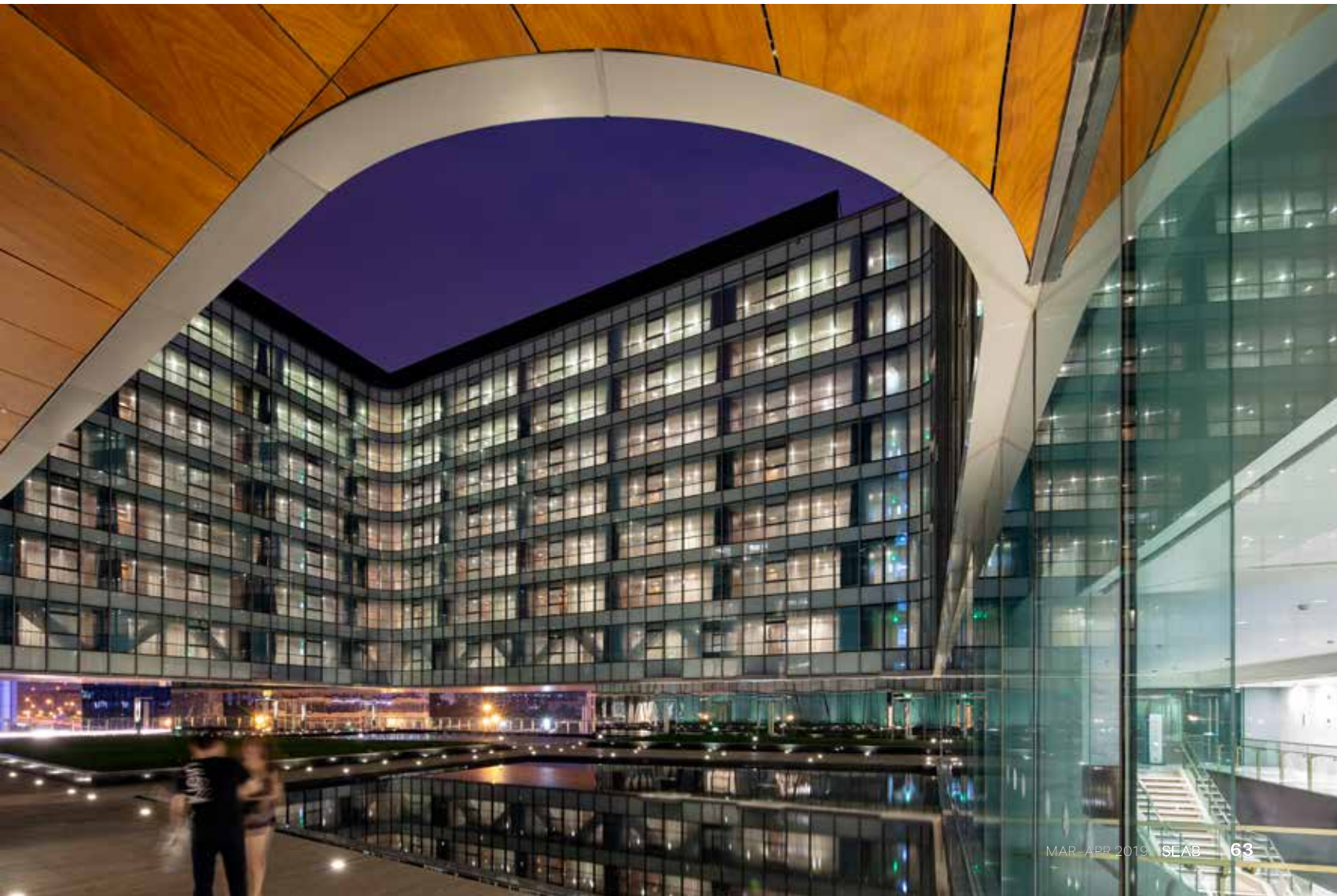
Gross Floor Area of Entire Development: 63,641 square metres

Completion: 2017

Awards: Cityscape Awards for Architecture in Emerging Markets 2015 – Winner, Future Leisure & Hospitality Project Award

& Asia Pacific Property Awards 2014 – 5-Star, Best Hotel Architecture, China

Photos: © Aedas







“In addition to rational zoning, the design promotes a highly interactive relationship among different functions, transforming the zoning diagram into a building mass with unique yet powerful spatial effect.”

– Ken Wai, Global Design Principal, Aedas

SIX SENSES MAXWELL, SINGAPORE

Six Senses Maxwell is set in a block of heritage shop houses in Singapore's Chinatown and has been beautifully restored to its original grandeur with interiors by French designer Jacques Garcia.

Six Senses Maxwell has opened at 2 Cook Street, in the historic Tanjong Pagar district of Singapore, completing the brand's first ever city hotel project after the opening of sister property Six Senses Duxton, with both locations together comprising Six Senses Singapore.

Situated in a prime location at the junction of Duxton, Tanjong Pagar and Maxwell Road, Six Senses Maxwell occupies a place replete with history. Originally the site of a nutmeg plantation, 14 three-storey and four-storey colonial-style buildings were subsequently constructed and later joined together as a single entity to create a colonial-style 19th-century heritage building that now houses the hotel.

Built in 1929, the structure features an Art Deco frontage with exposed brickwork, unique lion head rainspouts, and a flagpole hinting at a possible past as a government building. Lovingly conserved, Six Senses Maxwell showcases the refined yet flamboyant and sensual aesthetic of renowned French architect and interior designer Jacques Garcia, and stands in contrast to the Anouska Hempel-designed Six Senses Duxton.

Six Senses Maxwell accommodates 138 guest rooms and suites located across four floors of the sustainably restored building, all thoughtfully decorated with custom furnishings and original artwork; an outdoor rooftop lap pool, a gymnasium, spa pods, two restaurants and three bars that are destined to add to the vibrancy of the already ebullient neighborhood.

Six Senses Maxwell aims to pay homage to Singapore's unique position as the crossroad between East and West, with its rich Asian traditions and warm European heritage and influence that together have contributed to what this vibrant city is today.

Design

Reflecting the authentic decor and furnishings of the era in which it was built, but with a stylish modern twist, Garcia has infused a Western sensibility along with a timeless ambience into Six Senses Maxwell, as he has done most notably with Hôtel Costes in Paris and NoMad in New York. Renowned as one of France's most highly decorated designers, Garcia has outfitted many iconic buildings in Paris and across the world, including a remarkable installation

at the Louvre. Garcia has been named commander of the Order of Arts and Letters, and a Chevalier in the order of the Légion d'honneur in France for his many achievements.

Garcia's inimitable sensibilities are on full display once the double door front entrance of Six Senses Maxwell on the corner of Cook and Tras Streets swing open to a welcoming sight of the warm chestnut wood framed reception desk, complemented by Garcia's eponymous collection of flamboyant high-backed velvet chairs with tassels. These sit on intricately designed custom-made handwoven silk rugs that took 14 months to complete.



Cook & Tras Social Library

Located on the ground floor of Six Senses Maxwell and lined with lush tropical foliage right next to the lobby area is Cook & Tras, a social library restaurant and bar influenced by Straits heritage cuisine.

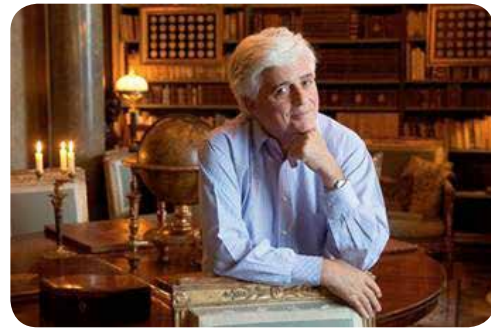




Featuring a mirrored ceiling highlighting the classic décor and luxurious style of designer Garcia, Cook & Tras reflects a warm European influence and personality showcased through richly textured custom-designed furnishings. Melding tradition and modernity, this elegant establishment is characterised by its specially curated book collection designed by the UK's Ultimate Library, known for their dedication to building bespoke book collections for hotels and private residences around the world.

Murray Terrace Brasserie

Murray Terrace Brasserie is a European styled brasserie named after the building in which it is housed and coincidentally also the first name of the hotel's general manager. Its design blends classic Parisian elements with marble tables, and Asian influenced wine displays along with handcrafted Indonesian furniture. The Brasserie's grand entrance, just opposite Maxwell Food Center, follows a Parisian café style layout with sidewalk tables along the five-foot (1.7-metre) way, a private room, and seating for up to 100 guests inside the dining room.



“What I hate above all are these standard decor concepts without soul, without life, without roots that everybody can see in the interior design magazines. My work has a constant focus on origins, on what the ancients had already discovered. I do not try to re-invent, I much prefer to retrieve the perfect proportions that the ancients transmitted us.”

– Jacques Garcia, Founder of Studio Jacques Garcia

PROJECT DATA

Project Name: Six Senses Maxwell
Location: Chinatown, Singapore
Client: Six Senses Maxwell
Architect & Interior Design Firm: Studio Jacques Garcia
Gross Floor Area: 6150.23 square metres
Completion: December 2018
Photos: © Six Senses Hotels Resorts Spas



THE DATAI LANGKAWI

Hailed as the world's unparalleled rainforest resort, The Datai Langkawi in Langkawi opened recently after one year of renovation.

After 25 years in an expansive site of more than 46 acres, The Datai Langkawi is ready to reveal its newly refurbished interiors and facilities, without compromising the Datai's DNA, following a 12-month renovation programme.

Nestled in the heart of a 10-million-year-old rainforest, when the late Australian architect Kerry Hill envisioned The Datai Langkawi's main building, on a forest ridge 40 metres above sea level and 300 metres away from the ocean, it was initially met with bewilderment. But he stood his ground, determined to preserve the pristine beauty of the coastline and unveil the hidden treasures of the rainforest. Assisting him was designer Didier Lefort of award-winning Paris-based design studio DL2A.

Today, the legacy of the extraordinary resort on the island of Langkawi, set in the heart of a virgin rainforest, has been reimagined into a global icon for new generations since its inception in 1993.

"The vision was very clear from the start. We wanted to refresh the spaces whilst maintaining the signature Datai DNA. We made sure local materials and inspiration from the environment, surroundings and culture were used so our regular guests will still feel very much at home when they return," said Arnaud Girodon, General Manager, The

Datai Langkawi.

The resort has 121 rooms, suites and villas, all with enchanting views of the lush tropical rainforest, some with the breath-taking vista of the Andaman Sea with Tarutao Island on the horizon. Escape to the perfect seclusion of a private sanctuary with the resort's Canopy, Rainforest or Beach Collection. Guests will also enjoy a diverse selection of cuisine, inspired by regional flavours and centred around locally-sourced ingredients.

The Datai Langkawi's private footpath leads to dreamy Datai Bay's idyllic white-sand beach, which was voted as one of the World's Top 10 Beaches by National Geographic. The resort is nestled in a virgin rainforest, home to a wealth of extraordinary biodiversity of flora and fauna. Against a backdrop of Southeast Asia's oldest mountain, Machincang, its 750-hectare rainforest 'back garden' is every nature lover's dream, just waiting to be discovered.

Led by renowned naturalist and author Irshad Mobarak, the completely new Nature Centre will encompass mini laboratories to enable guests, young and old, to discover more about the marine and rainforest environment that surrounds them, and will also allow them to participate in conservation and scientific research activities.

To protect this unique natural habitat, sustainability is also a key component of the resort's strategy with a strong commitment to using less energy, water



The Datai Langkawi – The Nature Centre (exterior)



Aerial shot of The Datai Langkawi.



The Datai Langkawi – The Dining Room (exterior)



The Datai Langkawi – Rainforest Villa (bathroom)



The Datai Langkawi – Canopy Deluxe (bedroom)

and single-use plastic. For example, guests are provided with stainless steel drinking flasks for excursions to replace single-use plastic water bottles; sustainable bamboo toiletries are used in all rooms; and drinking straws are made of 100-percent natural bamboo or stainless steel. The Hotel produces its own water from the newly-introduced water bottling plant.

The Permaculture Garden is a self-sustaining, zero-waste, organic food production system. Its visitors can discover how saplings and seeds are saved at the Seedling Hut and learn about permaculture in the Outdoor Classroom. At the Organic Wealth Centre, organic waste is transformed into nutrition for the garden at the Worm Farm, where the worms decompose buffalo manure and food waste to produce bio-fertiliser.

The refreshed resort will offer guests nature- and culture-based experiences, promote Malaysian hospitality to the world and reaffirm The Datai Langkawi as an unparalleled luxury destination.



The Datai Langkawi – Health Club



“It was important to maintain a deep connection to the original vision of a luxurious retreat seamlessly integrated into the 10-million-year-old virgin rainforest. The approach marries simplicity, modernity and creativity with inspirations from the local environment, culture and materials. The addition of latest technology ensures the ultimate in contemporary comfort, with the signature Datai DNA still evident throughout.”

– Didier Lefort, Interior Designer, DL2A



The Datai Langkawi – Rainforest Pool Villa

PROJECT DATA

Project Name: The Datai Langkawi (Refurbished)
Location: Langkawi, Kedah, Malaysia
Client: The Datai Langkawi
Architect Firm: Kerry Hill Architects
Interior Design Firm: DL2A
Floor Area of Canopy Deluxe Room (lead in category): 63 square metres
Completion: 2018
Photos: © The Datai Langkawi

THE PAVILIONS HIMALAYAS LAKE VIEW

Nepal's first luxury tented eco villas, overlooking Phewa Lake, opens in January 2019.

Boutique hotel group The Pavilions Hotels & Resorts has announced the opening of The Pavilions Himalayas Lake View – the first luxury tented eco villas of their kind in Nepal, and the brand's second property in the region alongside the award-winning The Pavilions Himalayas.

Accessed via paddle boat across the majestic Phewa Lake, the eight new tented villas are oases of calm surrounded by cascading rice fields and the Annapurna Himalayas. The unique open design of the villas provides unobscured views of the breathtaking landscape, allowing guests to connect with nature without sacrificing luxury and comfort. Mountain botanicals and a natural spring pool form the basis of a uniquely Himalayan wellness experience, while Nepalese and international cuisine is crafted using produce cultivated at The Pavilions Himalayas' very own organic farm. Together the hotel and farm offer employment to the local Pokhara community, reflecting the brand's dedication to true sustainability, encompassing community outreach and low impact operating practices.

Arriving at The Pavilions Himalayas Lake View is an unforgettable adventure in itself. Gliding across the picture-postcard Phewa Lake by boat, guests are mesmerised by the monumental landscapes and gentle rhythm of the boatman's paddle. Before a short hike

along a curving mountain trail brings them to their secluded lakeside haven. Jeep Safari transfers are also available on request, while the more adventurous can opt for a beautiful five-hour trek from sister hotel The Pavilions Himalayas.

Embodying the laidback charm of Pokhara, the eight tented villas capture the essence of a back-to-nature experience in a truly majestic setting, without forgoing the contemporary comforts and exceptional quality of service for which The Pavilions is renowned. Guests can choose from four Classic Lake Villas (40 square metres), three Grand Lake Villas (50 square metres), or the capacious Royal Lake Villa (82 square metres). Each has been created using natural, local materials and features floor-to-ceiling, fully retractable wraparound glass doors; handcrafted furniture; and al fresco rain showers, blurring the boundary between the interiors and their lush surroundings.

The landscape provides endless opportunities to explore, revitalise and connect with nature. Days can be spent trekking the mountains, meditating, kayaking on the lake or joining guided walks led by a local naturalist. In between times, the clubhouse offers refreshments and local treats, while a team of therapists deliver rejuvenating wellness experiences combining foraged botanicals and traditional healing techniques.

“We were inspired by the golden age of adventure travel, and give our guest the chance to feel like one of those early explorers. The Pavilions Himalayas Lake View was designed to protect the environment and built to blend in with the natural scenery of the slopes of the rice paddies and utilising lightweight, eco-friendly structures to best preserve the original landscape.”

– **Andrzej Adaszewski**, Co-Founder of The Pavilions Himalayas

PROJECT DATA

Project Name: The Pavilions Himalayas Lake View
Location: Pokhara, Nepal
Client: The Pavilions Hotels & Resorts
Architect Firm: Wonaw & Associates (Alex Shrestha)
Interior Designer: Coconut Groove Interiors (Mapple)
Floor Area: 910 square metres
Completion: January 2019
Photos: © The Pavilions Hotels & Resorts



The Pavilions Luxury Camp Pokhara Coconut Grove Interiors



ALL-NEW CONRAD BANGKOK

Thai tradition meets intelligent interior design at the newly refurbished Conrad Bangkok.

Part of Conrad Hotels & Resorts and the Hilton, the award-winning Conrad Bangkok is set to enhance guest experience as it unveiled a major refurbishment in January 2019.

The striking new makeover ensures guests receive the warm welcome and authentic experience so typical of Thailand in a luxurious setting. Located in the heart of Bangkok's commercial district, Conrad Bangkok offers guests resort-style facilities in an urban location close to the incredible sights, shopping and entertainment of this dynamic city.

Throughout the hotel, designer Ray Chuang of celebrated Cheng Chung Design has combined the elegance and warmth of teak, evoking Thailand's local temples and traditional houses, with lighter oak, gold and brushed bronze to stunning effect. The towering pagoda is an iconic sight in the Thai capital and so as guests enter the spacious lobby they will be greeted by the elegant outline of a temple and pagoda seen from the Ratcha Woradit Royal Pier given a modern twist.

The hotel's 391 beautifully appointed guest rooms, 20 suites and 56 twins, blend Thai décor, natural woods and sensuous silks. Contemporary luxury and innovative technology includes multi-use, desk-dining tables allowing rooms to function for both work and

leisure, as do multiple universal adaptor connections. For the perfect night's sleep, each guest room is equipped with our signature The Conrad Bed with USB ports placed on either side. Several rooms feature a full-sized convertible sofa bed.

The renovation also introduces two new room types - Premium Room and Grand Premium Room. All rooms are equipped with intelligent technology, such as climate control based on external temperatures and the position of the sun. Carefully calibrated lighting designed by leading lighting consultants Tino Kwan ensures the appropriate light levels are preset for day and night, working and relaxing.

Conrad Bangkok is surrounded by premier shopping malls and all the entertainment of the commercial district, accessible via its free shuttle service to the nearby BTS Skytrain. Perfect for family visits, the hotel's "7th heaven" floor offers family-friendly facilities such as swimming pool and a playground equipped with a safety floor. There are also on-site health and fitness facilities in the hotel.

Conrad Bangkok has been awarded "Best Convention Hotel in Thailand and Asia Pacific" by The International Hotel Awards and was also named Country Winner Thailand, "Luxury City Hotel" by World Luxury Hotel Awards.

"Conrad Bangkok has created a seamless connection between contemporary design, leading innovation and curated art to inspire the entrepreneurial spirit of the globally connected traveler. The new design is inspired by the subtle shades of teak wood, widely considered the queen of timber, and intricate carvings of wooden temples and pagodas reflect a timeless impression of Bangkok, placed artfully in the main lobby."

– Ivy Chan, Commercial Director at Conrad Bangkok





PROJECT DATA

Project Name: Conrad Bangkok (Refurbished)
Location: Bangkok, Thailand
Client: Conrad Hotels & Resorts
Architect: P&T Group
Interior Designer: Ray Chuang, Cheng Chung Design
Floor Area: 28,546 square metres
Completion: January 2019
Photos: © Conrad Bangkok



“International House Sydney is the culmination of 10 years of study and research into mass timber structures from us.”

– An interview with Jonathan Evans, Director of Tzannes



Jonathan Evans

At the World Architecture Festival (WAF) in Amsterdam in 2018, The Best Use of Certified Timber Prize, supported by PEFC, was awarded to Tzannes for their International House Sydney project in Australia. The category had an exceptional range of high-quality entries which made judging challenging. The winner's innovative development of certified timber as a durable, sustainable and commercially viable material was deemed by the festival's judges as "exemplary". The judges also felt that "the architects have set new standards for future architectural solutions and workplace environments." In this issue, Jonathan Evans, Director of Tzannes tells *SEAB* more about the design of the building and the sustainable features of engineered timber as a building material.



Photo: © Ben Guthrie



Photo: © Ben Guthrie

SEAB: A big congratulations to Tzannes for being awarded The Best Use of Certified Timber Prize for the International House Sydney project at Barangaroo South in Sydney. How does it feel for you and the firm as a whole, to win such a prestigious award?

JONATHAN: Thank you! It was a great honour to receive this international award and especially for the fact that it recognises the use of certified timber, which is really important to us – the timber we use must be sourced from sustainably managed forests or recycled material.

International House Sydney is the culmination of 10 years of study and research into mass timber structures from us, maximising the efficiencies and benefits pre-fabrication and rapid assembly – so it feels great for the hard work and innovative thinking to be recognised at the World Architecture Festival 2018.

SEAB: Can you briefly describe to us the design concept of the building?

JONATHAN: The project explores a new form of architectural beauty through the use of a timber frame, one of unique and integral character, where the structure and architecture are united and the aesthetic discipline driven by the material properties and construction logic.

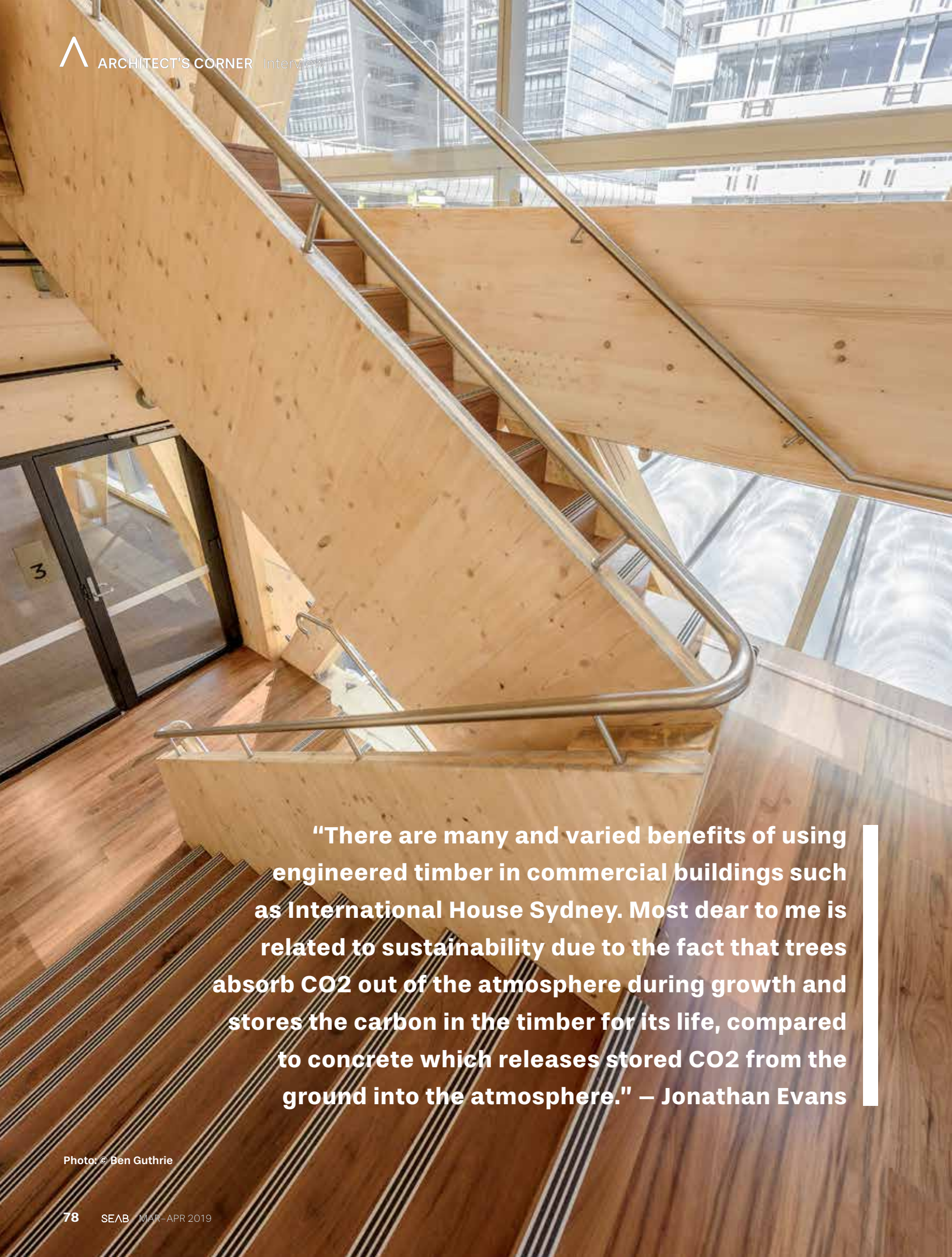
With the advantages of biophilic design and warm natural interiors delivered by the expressed timber frame, the workplace environment is designed to be nurturing and uplifting for the users.



Photo: © Ben Guthrie



Photo: © Ben Guthrie



"There are many and varied benefits of using engineered timber in commercial buildings such as International House Sydney. Most dear to me is related to sustainability due to the fact that trees absorb CO₂ out of the atmosphere during growth and stores the carbon in the timber for its life, compared to concrete which releases stored CO₂ from the ground into the atmosphere." – Jonathan Evans

“The project explores a new form of architectural beauty through the use of a timber frame, one of unique and integral character, where the structure and architecture are united and the aesthetic discipline driven by the material properties and construction logic.” – Jonathan Evans

SEAB: Whose decision was it to use engineered timber for the building – Tzannes or the client's Lend Lease?

JONATHAN: The brief for the project was for the building to be sustainable, desirable and distinctive, yet was assumed to be constructed from concrete like the rest of the precinct. With the support of some timber champions within Lendlease, we developed two schemes in parallel during sketch design phase – one using and celebrating mass timber and the other concrete. In the end the timber scheme was irresistible and proven to be identical project cost as the concrete scheme, so Lendlease backed it and the stunning results, beyond everyone's expectations, have rewarded their courage.

SEAB: How many types of timber materials have you used in the building and from where did you source them?

JONATHAN: There are two distinct types of timber used in the building. The upper levels utilise engineered timber fabricated from a softwood species called spruce. These elements were pre-fabricated in Europe by Stora Enso and Hess before shipping to Australia in a fully completed condition ready for site. Recycled Australian hardwood members from ironbark and turpentine species were selected for the external timber to provide enhanced weathering protection, supplied by Australian Architectural Hardwood in Kempsey, Australia. The blond, honey colour of the first marries beautifully with the rich, deep red-brown of the second.

SEAB: What is the total floor area of the building and what percentage of the



Photo: © Ben Guthrie

building is covered with engineered timber?

JONATHAN: The building is seven storeys high totaling around 8,000 square metres of commercial and retail space. Only the ground level is constructed in concrete, with all of the upper levels constructed fully from engineered timber, including the floors, roof, core walls, lift shafts, egress stairs, everything – so I guess the percentage of mass timber is around 85 percent of the building.

SEAB: What are the top benefits of engineered timber as a building material?

JONATHAN: There are many and varied benefits of using engineered timber in commercial buildings such as International House Sydney. Most dear to me is related to sustainability due to the fact that trees absorb CO₂ out of the atmosphere during growth and stores the carbon in the timber for its life, compared to concrete which releases stored CO₂ from the ground into the atmosphere. Significantly increasing the area of our forests globally and constructing our cities from the timber will help reverse global warming. On top of this fundamental benefit, timber structures are faster, quieter and safer to build, as well as providing more pleasant indoor

workplaces for the users.

SEAB: What challenges did you face during the design and construction of the building?

JONATHAN: Being the first of its kind, we could not rely on previous examples but needed to return to first principles analysis for many aspects of the design and construction. This was a very rewarding process assisted by a collaborative team effort and extensive testing.

High end digital modelling technology allowed the design team to model and co-ordinate each individual element of the building, and the delivery team to study various scenarios of construction sequencing to ensure reduced duration on site. This digital model was then issued to the engineered timber suppliers and used to fabricate the pieces exactly as documented.

SEAB: In your opinion, are timber buildings are growing trend in Australia and Southeast Asia?

JONATHAN: We have seen incredible interest in mass timber buildings since the completion of International House with the phones running hot from tenants who missed out on leasing this one. The risks of the unknown have been removed and the benefits associated with timber frame have been proven in the fiercely competitive market place.

Tzannes is continuing with our process of continual research, looking at the use of mass timber in hot and humid climates like in Southeast Asia. The challenges can be overcome in these climates and we look forward to designing more beautiful timber structures throughout this region.

Niagara 4 opens up new opportunities to achieve operational excellence

With nearly half a million instances worldwide, Tridium's Niagara Framework is quickly becoming the operating system of the Internet of Things. Its open API, open distribution business model and open protocol support give you the freedom to choose how you work, what you build and with whom you partner. Niagara enables you to connect and control devices, while normalising, visualising and analysing data from nearly anywhere or anything.

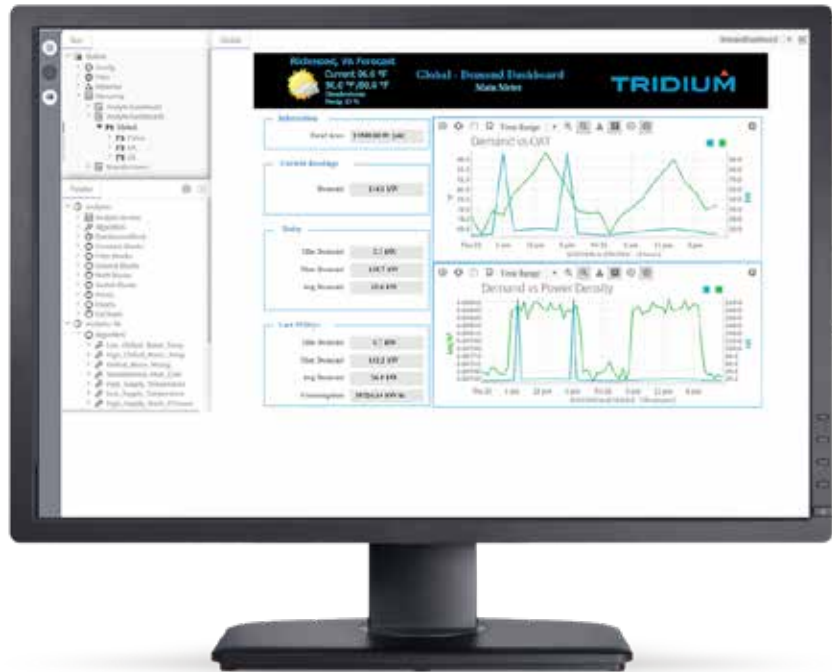
From buildings and data centres to manufacturing systems and smart cities, the Niagara Framework improves strategic decision-making, allowing for optimized performance and cost reductions that can help businesses be more competitive and more profitable. And with the release of Niagara 4 and the JACE® 8000 controller, the opportunity to achieve operational excellence is even greater than before.

Niagara 4 – Open for performance

Niagara 4 builds on the legacy of the Niagara Framework® in new and exciting ways. It is less reliant on browser plug-ins, faster and easier to use. Now end users can directly access, analyse and act on a wide range of operational data. A truly open framework, Niagara 4 delivers a variety of notable improvements to help businesses take full advantage of the Internet of Things, including advanced visualisation and new search, security and navigation tools.

Niagara 4 – Key features

- Modern UX framework and design language (HTML5)
- End users are able to easily customise dashboards
- Advanced charting and visualisation
- Data tagging
- Tag-based navigation
- Device templating
- Data cleansing capabilities
- Niagara station search
- Workbench workflow improvements



- Role-Based Access Control (RBAC)
- Pluggable authentication schemes
- Improved UI developer experience (BajaScript 2.0)
- Station templating
- Niagara AX to Niagara 4 station migration tool

JACE 8000 controller – A modular approach for global design

Optimised for Niagara 4, Tridium has created an all-new hardware platform: the JACE 8000 controller. This "next-generation" controller features a new global design that functions with legacy systems and has the ability to scale for future needs.

JACE 8000 controller – Key features

- Powerful Niagara 4 hardware platform with easy software upgrade capability
- Modular hardware design for fast and easy installation
- Tool-less installation
- Expandable with up to four option modules



- Native Wi-Fi capability
- 24VAC/DC – standard global power supply
- Standard open drivers included
- Easy to select the right capacity license
- Intuitive user interface
- Rich choice of different colors, materials and finishes for differentiated OEM brand identification

Tridium's native Niagara Fox protocol will work between the Niagara AX and Niagara 4 software systems, and the Niagara 4 software will work with any currently available JACE hardware.

3 ▶ 6 JULY 2019
**KUALA LUMPUR
CONVENTION CENTRE**

An Event Of:
KLAF2019
KUALA LUMPUR ARCHITECTURE FESTIVAL

ARCHIDEX[®]

**THE 20TH INTERNATIONAL ARCHITECTURE, INTERIOR
DESIGN & BUILDING EXHIBITION 2019, MALAYSIA**

20 Years
**BUILDING
TOGETHER**

**THE REGION'S
LEADING ARCHITECTURE
BUSINESS EVENT**

Featuring:



Concurrent Exhibitions:



Jointly Organised By:



Endorsed By:



Supported By:



Premier Partner:



**SCAN HERE to
Pre-Register
your Visit!**

[@reg.ARCHIDEX.com.my](https://www.reg.ARCHIDEX.com.my)



www.ARCHIDEX.com.my

architect'19

The 33rd ASEAN's Largest Building Technology Exposition

**30 APR -
5 MAY
2019**

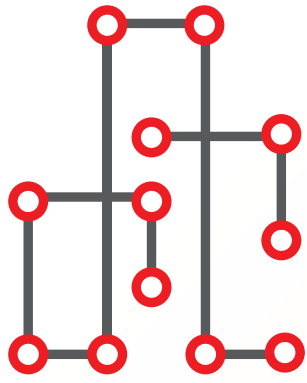
**CHALLENGER
HALL 1 - 3
10 AM - 8 PM
IMPACT**



asa



www.asa.or.th



Architecture & Building Services 2019

Providing Solutions for Smart Nation Building

PRESENTING



ArchXpo 2019

The 6th International Exhibition of Architecture & The Built Environment



International Facility Management Expo 2019

The 7th International Facility Management Equipment, Products, Technology & Services Exhibition



LIGHT Asia 2019

The 6th International Lighting Technology Show



Safety & Security Asia 2019

The 18th International Safety & Security Technology & Equipment Exhibition



Fire & Disaster Asia 2019

The 16th International Disaster, Emergency Management & Fire Prevention Technology & Equipment Exhibition



Work Safe Asia 2019

The 6th International Workplace Safety Technology & Equipment Exhibition

1 - 3 October 2019

Halls B & C, Marina Bay Sands, Singapore

10,000sqm gross exhibition space • **250 exhibitors** from 20 countries •
9,000 trade professionals from 40 countries

Be a part of **Architecture & Building Services 2019**: the key platform that aims to provide solutions for smart nation building. Launch and showcase your new solutions, technologies and products to create the building blocks of a Smart Nation!

Embracing 6 titles under one roof, this influential series will have a strong impact on all facets of the building scene in Singapore, attracting architects, interior designers, engineers, developers, system integrators and more!

For booth enquiries, call:
(65) 6278 8666

www.architecturebuildingservices.com.sg

Organised By



1 Maritime Square #09-43, HarbourFront Centre, Singapore 099253
info@cems.com.sg • (65) 6278 8666



ASIA INFRASTRUCTURE '20

14-16 January 2020 • BORNEO CONVENTION CENTRE KUCHING

ASIA'S INTERNATIONAL INFRASTRUCTURE DEVELOPMENT EXHIBITION & CONFERENCE

14-16 January 2020
Borneo Convention Centre Kuching,
Sarawak

**To Book Your Booth at the Expo, Contact
Ms. Rina at +603 2692 6888 or rina@ambtarsus.com**

Hosted by:



Supported by:



In-conjunction with:



Organised by:



Theme:
**'The Road To Development
– the Pan Borneo Highway'**

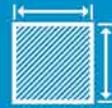
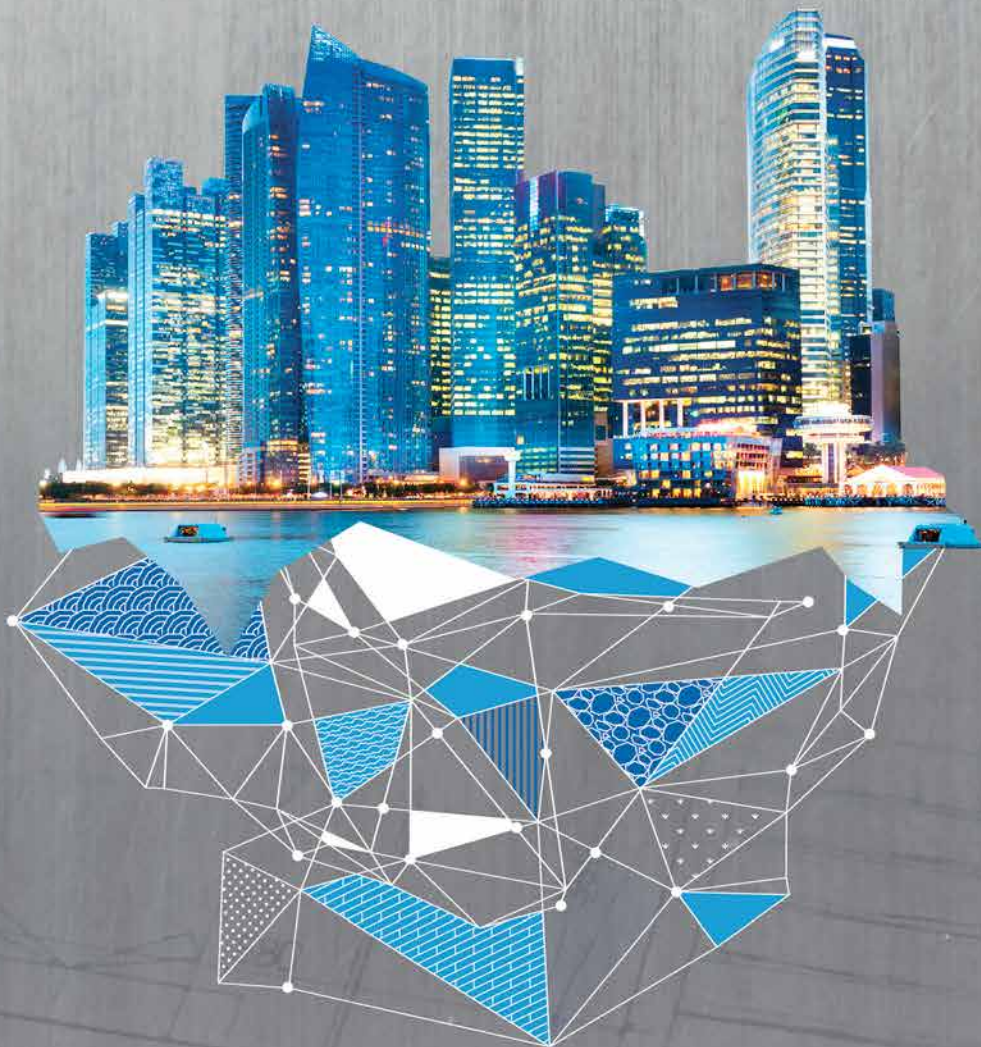
www.asiainfrastructure.org

27-29 JUNE 19

IMPACT Exhibition Center, Hall 6, Bangkok, Thailand



THE BUILDING & FM EXPO



5,000 Sq.m.
Exhibition space



150
Exhibitors



4,000+
Qualified visitors



**Book Your Stand
Now!**

Contact: Ms. Radcharin Nuttayakul (Tucky)

M: +66 (0)8 6561-3344 T:+66 (0)2 833-5111 E: radcharinn@impact.co.th

Follow us on
BMAM Expo Asia



Organizer

IMPACT
MUANG THONG THANI

CAMBODIA'S BIGGEST INTERNATIONAL BUILDING, CONSTRUCTION AND M & E INDUSTRY SHOW

To Book Your Booth at the Expo, Contact
Mr. Richard +603 2692 6888 or
richard@ambtarsus.com

18 | 19 | 20

SEPTEMBER 2019

DIECC (KOH PICH), PHNOM PENH

CAMBUILD'19

CAMBODIA BIGGEST INTERNATIONAL BUILDING & CONSTRUCTION INDUSTRY SHOW

Co-located with:



**CAMBODIA ARCHITECTS
FORUM 2019**
11 SEPT 2019 • KOH PICH, PHNOM PENH

Endorsed by:



Ministry of
Commerce
Cambodia

Hosted by:



Board Of
Architects
Cambodia

Organised by:



Building #128, Office No: 103, 1st Floor, Russian Federation Blvd (110),
Sangkat Toek Laak 1, Khan Tuol Kork, Phnom Penh, Cambodia
Tel : 089 714 700 / 023 901 579 Email: kh@ambtarsus.com

**CONTACT US
FOR MORE INFO**

☎ 089 714 700/023 901 579 ✉ kh@ambtarsus.com
🌐 CamBuildCambodia 🌐 www.cambuildexpo.com

DANANGBUILD'19

DANANG'S INTERNATIONAL BUILDING AND CONSTRUCTION EXHIBITION

DANANG'S **1ST** MAJOR INTERNATIONAL
BUILDING, CONSTRUCTION AND M&E
EXHIBITION

28 29 30 AUGUST 2019

 DA NANG FAIR &
EXHIBITION CENTER

To Book Your Booth at the Expo, Contact
Ms. Husna at +603 2692 6888 or
husna@ambtarsus.com



Organised by:

M AMBTarsus
EVENTS GROUP

 www.danangbuildexpo.com

 Danang Build

Part of the
Super 8 Series of Events



19 - 21
March 2019

**Malaysia International Trade
And Exhibition Centre (MITEC)**

**CONSTRUCTION:
BEYOND**

2020

Organised By



UBM

www.ecobuildsea.com

**THE NO.1 PLATFORM FOR MYANMAR'S BUILDING
& CONSTRUCTION INDUSTRY**

MYANBUILD'19

MYANMAR INTERNATIONAL BUILDING & CONSTRUCTION INDUSTRY SHOW

**MYANMAR'S NO.1 INTERNATIONAL
BUILDING & CONSTRUCTION
EXHIBITION AND
CONFERENCE**

28 29 30

**NOVEMBER 2019
MYANMAR EXPO HALL, YANGON**

To Book Your Booth at the Expo, Contact Ms. Ei at +959 250371296 or
ei@ambtarsus.com



www.myanbuild.net



[www.fb.com/Myanbuild](https://www.facebook.com/Myanbuild)

Co-located with:



**MYANMAR ARCHITECTS
CONGRESS 2019**

28 NOVEMBER 2019 - MYANMAR EXPO HALL, YANGON

Hosted by: Organised by:



M AMBTarsus
EVENTS GROUP





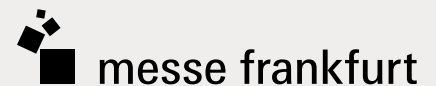
powered by Secutech

Smart Building with Internet of Things Solutions



Asia's 1st Platform to Provide
AI and IoT Solutions for Smart Buildings

8 – 10 May, 2019 | Nangang Exhibition Center, Taipei, Taiwan
Website: smabiot.secutech.com



Concurrent shows

secutech





Subscription Form

Fax your order today
+65 6842 2581

(Please tick in the boxes)

Southeast Asia Building

SEAB
SINCE 1974

1 year (6 issues)

Singapore	S\$45.00
Malaysia / Brunei	S\$90.00
Asia	S\$140.00
America, Europe	S\$170.00
Japan, Australia, New Zealand	S\$170.00
Middle East	S\$170.00

Bathroom + Kitchen Today

bathroom + kitchen
SINCE 2001

1 year (4 issues)

Singapore	S\$32.00
Malaysia / Brunei	S\$65.00
Asia	S\$80.00
America, Europe	S\$130.00
Japan, Australia, New Zealand	S\$130.00
Middle East	S\$130.00

Southeast Asia Construction

CONSTRUCTION
SINCE 1994

1 year (6 issues)

Singapore	S\$45.00
Malaysia / Brunei	S\$90.00
Asia	S\$140.00
America, Europe	S\$170.00
Japan, Australia, New Zealand	S\$170.00
Middle East	S\$170.00

Lighting Today

lighting today
SINCE 2002

1 year (4 issues)

Singapore	S\$32.00
Malaysia / Brunei	S\$65.00
Asia	S\$80.00
America, Europe	S\$130.00
Japan, Australia, New Zealand	S\$130.00
Middle East	S\$130.00

Security Solutions Today

Security Solutions Today
SINCE 1992

1 year (6 issues)

Singapore	S\$45.00
Malaysia / Brunei	S\$90.00
Asia	S\$140.00
America, Europe	S\$170.00
Japan, Australia, New Zealand	S\$170.00
Middle East	S\$170.00

IMPORTANT

Please commence my subscription in _____ (month/year)

Personal Particulars

NAME: _____

POSITION: _____

COMPANY: _____

ADDRESS: _____

TEL: _____ FAX: _____

E-MAIL: _____

Professionals (choose one):

- Architect
 Landscape Architect
 Interior Designer
 Developer/Owner
 Property Manager
 Manufacturer/Supplier
 Engineer
 Others

I am sending a cheque/bank draft payable to:
Trade Link Media Pte Ltd, 101 Lorong 23, Geylang, #06-04, Prosper House, Singapore 388399
 RCB Registration no: 199204277K * GST inclusive (GST Reg. No: M2-0108708-2)

Please charge my credit card (circle one): Amex / Diner's Club

Card Number: _____ Expiry Date: _____

Name of Card Holder: _____ Signature: _____



dormakaba Singapore	📍 Singapore	☎ +65 6268 7633	✉ helen.tan@dormakaba.com	🌐 www.dormakaba.com.sg	📖 OBC
Hunter Douglas	📍 Malaysia	☎ +603 5191 2020	✉ luxalon@hunterdouglas.com.my	🌐 www.hunterdouglas.com.my	📖 1
Mapei Far East	📍 Singapore	☎ +65 6862 3488	✉ mapei@mapei.com.sg	🌐 www.mapei.com.sg	📖 3



Schüco Singapore	📍 Singapore	☎ +65 6681 7480	✉ sea@schueco.com	🌐 www.schueco.com	📖 IFC
Tridium Asia Pacific	📍 Singapore	☎ +65 6580 3200	✉ tsupportap@tridium.com	🌐 www.tridium.com	📖 5

See us at following upcoming events!

Event	Date	City	Country	Website	Page
Ecobuild Southeast Asia 2019	19 - 21 Mar 2019	Kuala Lumpur	Malaysia	www.ecobuildsea.com	88
Architect Expo 2019	30 Apr - 5 May 2019	Bangkok	Thailand	asa.or.th/architectexpo	82
SMABIoT 2019	8 - 10 May 2019	Taipei	Taiwan	smahome.tw.messefrankfurt.com/taipei/en.html	90
BMAM Expo Asia 2019	27 - 29 Jun 2019	Bangkok	Thailand	bmamexpoasia.com	85
Archidex 2019	3 - 6 Jul 2019	Kuala Lumpur	Malaysia	www.archidex.com.my	81
Danang Build 2019	28 - 30 Aug 2019	Danang	Vietnam	www.ambtarsus.com/calendar-vietnam.htm	87
Cambuild 2019	18 - 20 Sep 2019	Phnom Penh	Cambodia	www.cambuildexpo.com	86
ArchXpo 2019	1 - 3 Oct 2019	Singapore	Singapore	www.archxpo.com.sg	83
Myanbuild 2019	28 - 30 Nov 2019	Yangon	Myanmar	www.myanbuild.net	89
Asia Infrastructure 2020	14 - 16 Jan 2020	Kuching	Malaysia	http://www.ambtarsus.com/calendar-malaysia.htm	84

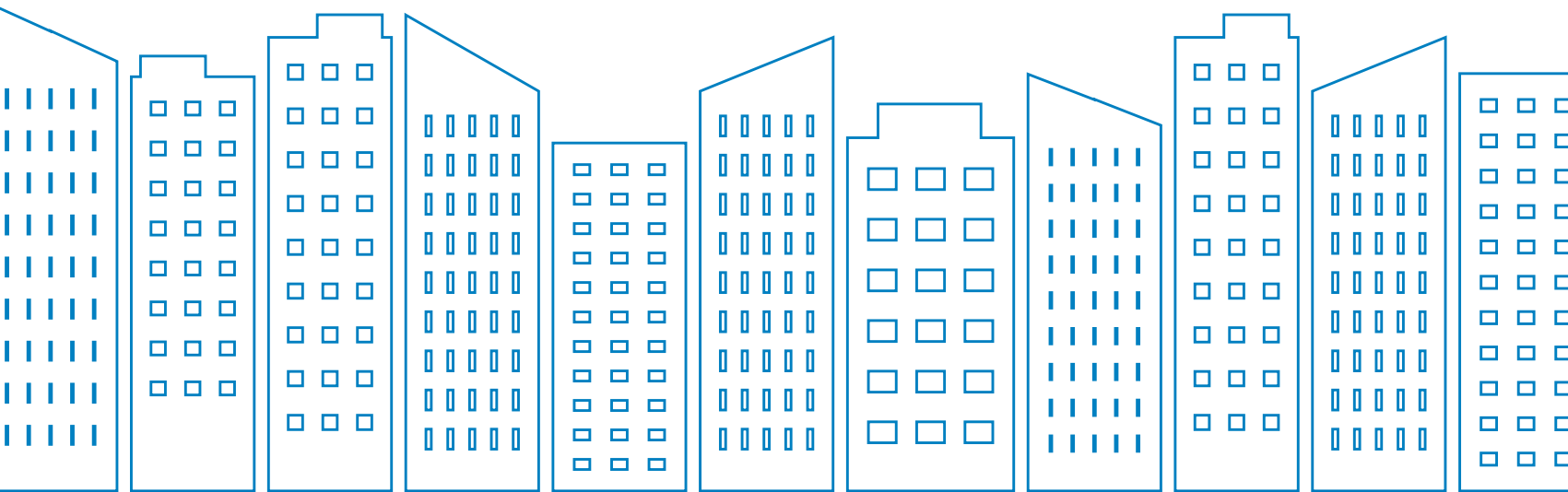


seab.tradelinkmedia.biz

Southeast Asia Building (SEAB), published bi-monthly since 1974, is a Singapore-based trade magazine devoted to Architecture, Interior Design, Landscaping and M&E Engineering available in print and on digital formats. SEAB is a free building trade journal circulated to more than 120,000 building professionals across Asia Pacific region.

Through our website, social media and messaging platforms, and mobile app, we aim to deliver concise, well-balanced reports which include industry news, project reports, product / technological updates, to our readers.

Our tribute to Architecture...



- TradeCards Global mobile application is offering **50% discount** for one-year organisation listing to suppliers and service providers that serve our Architecture Community. With the reduced price of USD500 / *SGD700 for one-year organisation listing, suppliers and service providers get to enjoy an **additional 10MB of product listing** tagged to your organisation listing.

Visit www.tradecardsglobal.com to sign up for a new account and your organisation listing. Input **"ARCHITRIBUTE"** as promo code before proceeding to payment page. The promo code is valid until 31 December 2019.

*Rate excludes 7% GST applicable for Singapore-registered companies

TRADECARDS
GLOBAL

Supporting mobile version of:

SEAB
SOUTHEAST ASIA BUILDING

SOUTH EAST ASIA
CONSTRUCTION

Security
Solutions today

bathroom
+kitchen

lighting
today



GET IT ON
Google Play



Download on the
App Store

The exivo team presents: **Convenient Access Control.** **Customised Solutions.** **Easy Security**



exivo was specially designed for SMEs that need a customised access solution that demands minimum effort on their part. If you like, your exivo partner can take care of everything for you, leaving you to focus on your core business, while staying within budget thanks to defined overhead and service costs.

dormakaba offices in ASEAN:

Singapore	Tel : +65 6268 7633
Malaysia / Brunei	Tel : +603 8081 8009
Philippines	Tel : +63 2 893 4077
Indonesia	Tel : +62 21 2930 3762
Vietnam	Tel : +84 903 704172
Thailand/Cambodia/ Myanmar/Laos	Tel : +66 2059 2612

www.dormakaba.com.sg

dormakaba 